



***Building a Sustainable Future***

---



# ***Order Tracker and Real Time Barcoding***

Eric Robbins & Jordan Palmer



## Barcoding

- What size and type of yard can benefit from Barcoding?
  - ALL SIZES AND TYPES!

Barcoding can cut production time in any yard and improve efficiency in all yards.



# Cost vs Employees

- Barcoding is much faster than an employee manually writing a location and changing it in Checkmate.
- It takes an average of 10 seconds to write the location, look up the part in Checkmate, and change the location.
- The chance for error is much greater when manually changing locations.
- Barcoding eliminates time spent walking back and forth.



# Barcoding

- Cost compared to employee
- Less time inventorying and searching for parts
- Less error / increased accuracy
- Less expense
- Initial setup requires rack labeling, running cables for Wi-Fi signal repeaters, and cost of equipment. All are one-time costs.



# Barcoding Features

- Instantly move parts
- Delete parts
- Audit a rack
- Reporting
  - View employee activity
  - View inventory movements

\*Accuracy is everything!



## Audit Report for Barcoding

**Reports**

Select Yard:

Select Scanner:

Select User:

< August, 2012 >

Sun	Mon	Tue	Wed	Thu	Fri	Sat
29	30	31	1	2	3	4
5	6	7	8	9	10	11
12	13	14	15	16	17	18
19	20	21	22	23	24	25
26	27	28	29	30	31	1
2	3	4	5	6	7	8

Today: 8/3/2012

WIRELESS BARCODE  
SCANNER REPORT  
YARD: 774  
Run for: Friday, August 03, 2012  
Scanner: ALL USER: ALL

LOCATION	TAG#	STOCK#	PART	MODEL	YEAR	DESCRIPTION
TR6-2B	00042636	HANKOOK	TIR	TIRES	2000	185-60-14 80%
TNF	1	TAG NOT FO				
TR6-2D	00040636	9447	TIR	CAVALI	2004	185-75-14 95%
TR6-2E	00040634	9447	TIR	CAVALI	2004	185-75-14 95%
TR6-2E	00044508	DAUGLAS	TIR			
TR6-2F	00044511	DAUGLAS	TIR	ANY	2000	195/70/R14,80%
TR6-2G	00044510	DAUGLAS	TIR	ANY	2000	195/70/R14,80%
TR6-2I	00045084	NEXEN	TIR	ANY	2000	205/55/R1690%
TR6-2I	00045083	NEXEN	TIR	ANY	2000	205/55/R1690%
TNF	00039306	TAG NOT FO				
TR6-1I	00040755	9442	TIR			
TR6-1H	00038948	16INCH	TIR			
TR6-1E	00041443	9478	TIR			
TR6-1D	00039849	17INCH	TIR	TIRES	2000	265-70-17 90%
TR6-1C	00042639	DIAMONDEAK	TIR	TIRES	2000	225-40-18 90%
TR6-1B	00038934	17INCH	TIR			
C16-1B	00043234	9555	TRA	CRYTOW	2000	
C16-1B	00043249	9571	TRA	CENTUR	2004	AUTO TRANS
C16-1B	00044351	9532	TRA	CCLASS	1997	AUTO TRANS
C16-1B	00043244	9591	TRA			
C16-1A	00043111	9495	FAX	ENVOY	2005	4x4
C16-1A	00044017	07TAURUS	TRA	TAURUS	2007	22K,NICE,RUNS,DRIVES,GREAT
C16-1A	00043184	9559	TRA	SEBRIN	2006	AUTO TRANS
C16-1A	00043155	9582	TRA			
C17-1A	00042979	9587	TRA	VIBE	2004	A.T., (1.8L, VIN 8, 8th digit), FWD
C17-1A	00038677	9311	TCS	F250SD	2007	AUTO TRANS
C17-1A	00031124	8969	TRA	LESABR	2000	3.8L,AUTO TRANS ID PBB
C17-1A	00043976	9623	TCS			
C17-1B	0101365	7700	TRA	MONTE	1998	6-191 (3.1L)-
C17-1B	022155	8104	CRR	PATHFI	2003	12/02,SE-
C17-1B	015598	8044	TCS			
C18-1A	00043109	9593	TRA	GNDCHE	2007	A.T., 6.1L (4x4),6.1L,AUTO TRANS
C18-1A	00044175	9263	TRA	CARAVN	2006	
C18-1A	00043089	9593	CRR	GNDCHE	2007	(Fr), exc. elec LSD; 3.73 ratio
C18-1B	00044005	9625	TRA	CAVALI	2001	A.T., 4-134 (2.2L), 4 spd (M4),2.2L
C18-1A	00042828	9558	TRA	HALIEU	2003	AUTO TRANS
C18-1A	00042794	9548	TRA			
C18-1B	00043118	8683	CRR	EQUINX	2005	
C18-1B	00042992	9576	CRR	CADSEX	2004	Rear, 3.90 ratio (opt GML), thru VIN
C18-1B	00043046	9570	TCS	CT1500	1997	





## Audit Report for Barcoding

Reports

Select Yard: 774

Select Scanner: ALL

Select User: ALL

Preview

Print

Cancel

< August, 2012 >

Sun	Mon	Tue	Wed	Thu	Fri	Sat
29	30	31	1	2	3	4
5	6	7	8	9	10	11
12	13	14	15	16	17	18
19	20	21	22	23	24	25
26	27	28	29	30	31	1
2	3	4	5	6	7	8

Today: 8/3/2012

C17-2A	00043660	9572	TRA					1900	TY
C17-2B	00045159	9685	TRA	F250SD	2006	A.T., (5R110W, TorqShift), 8-366 (6.0L,		1900	TY
C17-2B	00043335	8482	TRA	DAKOTA	2000			1900	TY
C17-2B	00043361	9514	TRA					1900	TY
C18-2A	00043674	9598	TRA	AUGORA	2001			1900	TY
C18-2A	00043711	9556	TRA	CPRIV	1999	3.1L,AUTO TRANS		1900	TY
C18-2A	00043509	99CHEVY	TCS	SILVLS	1999			1900	TY
C18-2A	00043864	9616	TRA	QX4	2001	A.T., 4x4,AUTO TRANS		1900	TY
C18-2A	023270	98FTF150	TRA					1900	TY
C18-2B	00043369	8899	TRA	SEBRIN	2008	2.7L,AUTO TRANS		1900	TY
TMF	0043410	TAG NOT FO						1900	TY
C18-2B	00043410	9594	TRA	CARAVN	2008	A.T., 3.8L (6 spd),AUTO TRANS		1900	TY
C18-2B	00043424	9529	TRA	PACIFI	2006	AUTO TRANS		1900	TY

DUPLICATE TAG NUMBERS FOUND

LOCATION	TAG#	STOCK#	PART	MODEL	YEAR	DESCRIPTION	SCANID	USER	
PARTS MOVED DURING AUDIT									
LOCATION	NEW LOCATION	TAG#	STOCK#	PART	MODEL	YEAR	DESCRIPTION	SCANID	USER
TR6-2D	TR6-2D	40636	9447	TIR	CAVALI	2004	185-75-14 95%	1900	TY
TR6-2E	TR6-2E	40634	9447	TIR	CAVALI	2004	185-75-14 95%	1900	TY
TR6-2E	TR6-2F	44508	DAUGLAS	TIR	ANY	2000	195/70/R14,80%	1900	TY
TR6-2F	TR6-2G	44511	DAUGLAS	TIR	ANY	2000	195/70/R14,80%	1900	TY
TR6-2G	00044509	44511	DAUGLAS	TIR				1900	TY
00044509	TR6-2H	44511	DAUGLAS	TIR	ANY	2000	195/70/R14,80%	1900	TY
TR6-2G	TR6-2I	44510	DAUGLAS	TIR	ANY	2000	195/70/R14,80%	1900	TY
TR6-2I	TR6-1J	45083	NEXEN	TIR	ANY	2000	205/55/R1690%	1900	TY
TR6-1I	TR6-1G	40755	9442	TIR	XTERRA	2004	265-65-17,95%,NICE	1900	TY
TR6-1H	TR6-1E	38948	16INCH	TIR	TIRES	2000	225-75-16 95%	1900	TY
TR6-1E	TR6-1D	41443	9478	TIR	FTF150	2004	255-70-18 95% PIRELLI	1900	TY
TR6-1D	TR6-1C	39849	17INCH	TIR	TIRES	2000	235-50-17----90%	1900	TY
TR6-1B	C16-1B	38934	17INCH	TIR	TIRES	2000	235-50-17 95%	1900	TY
C16-1B	C16-1A	43244	9591	TRA	REGAL	2001	A.T., 3.8L, w/o supercharger opt,AUTO TR1900	TY	
C16-1A	C17-1A	43155	9582	TRA	INTREP	2004	A.T., 2.7L,2.7L,AUTO TRANS	1900	TY
C17-1A	C17-1B	43976	9623	TCS	DPUS5	2004	MIKE NEEDS THIS CORE BACK	1900	TY
C17-1B	C18-1A	15598	8044	TCS	FTF150	1993	(W/rner 1356, slip yk on rr optpt), elect	1900	TY
C18-1A	C18-1B	42734	9548	TRA	G5	2009	AUTO TRANS	1900	TY
C18-1B	C16-2A	42931	9576	CRR	CADSRX	2004	Front, (AT, AMD), opt MKS (3.6L)	1900	TY
C16-2A	C16-2B	43727	9303	TRA	WINDST	1999	3.8L,AUTO TRANS, CHECK ID,	1900	TY
B8-2A	C17-2A	44131	18805	TRA	AEROST	1996	183V-6 ATOD 45K MI	1900	TY
C17-2A	C17-2B	43660	9572	TRA	DURANG	2006	4.7L,AUTO TRANS	1900	TY
C17-2B	C18-2A	43361	9514	TRA	DAKOTA	2002		1900	TY
C18-2A	C18-2B	23270	98FTF150	TRA	FTF150	1998		1900	TY

PARTS MISSING FROM (OR NOT SCANNED IN) LOCATIONS

LOCATION	TAG#	STOCK#	PART	MODEL	YEAR	DESCRIPTION	SCANID
----------	------	--------	------	-------	------	-------------	--------

PARTS MOVED DURING MOVE MODE

LOCATION	NEW LOCATION	TAG#	STOCK#	PART	MODEL	YEAR	DESCRIPTION	SCANID	USER
----------	--------------	------	--------	------	-------	------	-------------	--------	------



## Move Parts Report

Reports

Select Yard: 774

Select Scanner: ALL

Select User: ALL

Preview

Print

Cancel

< August, 2012 >

Sun Mon Tue Wed Thu Fri Sat

29 30 31 1 2 3 4

5 6 7 8 9 10 11

12 13 14 15 16 17 18

19 20 21 22 23 24 25

26 27 28 29 30 31 1

2 3 4 5 6 7 8

Today: 8/3/2012

LOCATION	NEW LOCATION	TAG#	STOCK#	PART	MODEL	YEAR	DESCRIPTION	SCANID	USER
PARTS MISSING FROM (OR NOT SCANNED IN)									
LOCATION	TAG#	STOCK#	PART	MODEL	YEAR	DESCRIPTION	SCANID		
PARTS MOVED DURING MOVE MODE									
LOCATION	NEW LOCATION	TAG#	STOCK#	PART	MODEL	YEAR	DESCRIPTION	SCANID	USER
OFF	C15-8C	45436	9661	HLP	ACCORD	2003	LH	1901	TY
OFF	C7-11D	45427	9695	DMR	SUB150	2004	Power, integral turn signal, opt DL3, LT1901	TY	
OFF	I15-8F	45433	9695	EDS	SUB150	2004	LH Driver's, lock, mirror & window, adj	1901	TY
OFF	I10-5F	45429	9665	HAC	R10	2004		1901	TY
OFF	I11-8A	45434	9693	EDS	CHR300	2005	LH Driver's, window, w/o anti pinch wind	1901	TY
OFF	I11-8B	45432	9694	EDS	AVAILON	2002	LH Driver's, (master/window), w/o memory	1901	TY
OFF	I15-7A	45431	9039	WVF	TACOMA	2008	ID#85110-04040	1901	TY
OFF	N1-3D	45425	9684	DMR	AVAILON	2002	Power, LH non-heated	1901	TY
OFF	N1-5C	45428	9693	DMR	CHR300	2005	Power, fixed (black), LH	1901	TY
OFF	N2-2E	45426	9370	DMR	SILV15	2004	RH	1901	TY
OFF	Q10-6D	45444	9481	AFM	GPRIX	2004		1901	TY
OFF	N4-6A	45448	9583	HLP	MALIBU	2003	LH,NEEDS,BUFFED,BAD!!!!!!	1901	TY
OFF	07-5A	45445	9481	EXC				1901	TY
OFF	09-4C	45421	9609	HAC	LESABR	2000	ID#16236054	1901	TY
OFF	09-5B	45447	9376	ABK	CAMRY	2004		1901	TY
OFF	G3-3E	45430	8985	ALT	FOCUS	2008	ID#8547-10300-AC	1901	TY
OFF	R1-2A	45039	9620	BWM	SILV25	2007	new style (smooth Dr skin), fixed, non-hi	1901	TY
07-5A	B9-1A	45445	9481	EXC	GPRIX	2004	ID#12581501	1901	TY
OFF	R1-2Q	45417	9609	QWN	LESABR	2000	RH,REAR	1901	TY
OFF	7-4D	45419	9128	ABK	DPULS	1999	ID#P5200943LAG	1901	TY
OFF	+4-7D2	45416	8939	PPM	F250SD	2002	SUPPLY,PUMP,ONLY,	1901	TY
OFF	+5-1F3	45418	9629	GRL	SEBRIN	2006	CRACKED,TAB,2,BROKEN,TABS,ON,BOTTOM,CHIP	1901	TY
YLOT	J7-2L	45367	9692	ECM	IMPALA	2003	Fan Assm, 3.8L, w/o hvy duty cooling	1901	TY
YLOT	J8-2B	45366	9692	RAD	IMPALA	2003	3.8L, w/o hvy duty cooling,AUTO TRANS	1901	TY
YLOT	I5-7A	45374	9692	PPM	IMPALA	2003	Pump Assembly	1901	TY
YLOT	F2-3B	45163	9685	ALT	F250SD	2006	diesel, sgl alt, 110 amp	1901	TY
YLOT	E3-1G	45043	9673	SPH	300M	2004		1901	TY
YLOT	F5-3B	45162	9685	STA	F250SD	2006		1901	TY
YLOT	R1-3G	45370	9692	COM	IMPALA	2003	8-363 (6.0L, diesel)	1901	TY
YLOT	R1-2F	45042	9673	COM	300M	2004	3.8L	1901	TY
YLOT	J2-2B	45373	9692	EXC	IMPALA	2003	Elec Cont Unit (ECU), (LH eng comp), 3.81901	TY	
FLOOR	4-1-2B	43755	9611	ENG	AVEO	2005	(1.6L, VIN 6, 8th digit), FIRED UP AND R	1901	TY
YLOT	2-3-1C	45368	9692	ENG	IMPALA	2003	3.8L (VIN K, 8th digit), FIRED UP RAN H	1901	TY
FLOOR	2-5-1B	43871	9505	ENG	SILV15	2002	*	1901	TY
YLOT	C17-2B	45159	9685	TRA	F250SD	2006	A.T., (SR110W, TorqShift), 8-366 (6.0L, 1901	TY	
YLOT	E1-1M	45148	9683	EDS	ESCALA	1999		1901	TY
OFF	TR2-1K	45399	BRIDGESTON	TIR	ANY	2000	265/75/R16,90%	1901	TY
OFF	TR2-1J	45400	GOODYEAR	TIR	ANY	2000	225/50/ZR17,90%	1901	TY
YLOT	R1-2D	45150	9683	WHL	ESCALA	1999	(16x7), alum	1901	TY
TR3-1J	TR2-1H	36804	18INCH	TIR	TIRES	2000	275-70-18 99%	1901	TY

PAGE 1

WIRELESS BARCODE

SCANNER ERROR

start

Fonality HUD ...

UPS WorldShip

SPEE-CEE SHIP

AlphaCom ...

Internet E...

2 Real-Time ...

FedEx Ship M...

WEB-SC

10:50 AM



## Types of Tags

- 3 part tags – Thermal
- 2 part tags – Thermal
- Single part tags – Thermal
- Tyvek tags

2 part tags work best for Barcoding and shipping labels from Order Trakker.

## Thermal Tags

- Aren't affected by weather
- Don't fade
- Easy to read
- Much harder to tear
- Ink will not dissolve from automotive fluids



## **Order Trakker – Production Software**

- Track orders until they are delivered
  - Reporting
    - Timestamps
    - Search ability - Historic search - who handled that order
- Nearly paperless
- Automated



# Order Trakker

- Tracking orders
  - Sales teams can track orders even through multiple locations
  - No radios needed/doesn't stop production
  - Yard/Warehouse/Dismantling team can see assignments in their queue
- Nearly paperless
  - Track an order from the time it's placed to the time it's delivered to customer.
  - No concerns about losing work orders



# Order Trakker

- Reporting
  - Employee performance
    - Yard
    - Warehouse
    - Brokered
  - Truck reports
- Shipping and return labels
  - Thermal
  - Easy to read
  - Know who the part is going to - reduce errors



# Order Trakker

## Automated

- When an item is sold, it is sent to the appropriate queue.
- When part location is changed in Checkmate, it moves to the appropriate Order Trakker tab.





## **Order Trakker Production Software**

- Tracking orders from point of sale to delivery
- Nearly paperless
- Order history
- Employee tracking
- Truck routing
- Multi-yard tracking
- Automated
- Tracking using Barcoding
- Improving efficiency



# Order Trakker Production Software

- Tracking orders from point of sale to delivery
  - Create work order/invoices in Checkmate.
  - Checkmate determines where the part should go in the production process.
  - Work order is put in the appropriate Order Trakker tab.



Dashboard	Order Tracker	Imaging	Terminal - 1	Find and Sell											
Tools	Reports	Search	View												
Dispatch (13)	Warehouse (8)	Dismantling (4)	Yard (15)	Brokered (6)	Arrived (2)	Void (425)	RdySnd (2)	CPU (309)	Truck	LTL (732)	FedEx/UPS (1598)	Returned (888)	Delivered (1)	Restocked (1149)	
Work Order	Invoice Number	Sold To	Sales Person	Part	Model	Year	Stock	Location	PO	Tracking	Delivery	Last Changed	Ship To	Truck	EZRoute
108518	108518	WALK IN TAXABLE	ALEX	ENG	DAKOTA	2004	TEST				ASAP	06/15/2015 01:18PM	WALK IN TAXABLE		NotSent
108519	108519	WALK IN TAXABLE	ALEX	ENG	DAKOTA	2004	test				ASAP	06/15/2015 01:20PM	WALK IN TAXABLE		NotSent
108520	0	WALK IN TAXABLE	ALEX	ENG	DAKOTA	2004	TREST				ASAP	06/15/2015 01:20PM	WALK IN TAXABLE		NotSent
108521	0	TIM'S AUTO BODY	TIM	FDR-	CIVIC	2008	OUT				ASAP	06/15/2015 05:29PM	TIM'S AUTO BODY		NotSent
108523	108523	TIM'S AUTO BODY	TIM	ENG	CORVET	2009	OUT				ASAP	06/15/2015 05:31PM	TIM'S AUTO BODY		NotSent
108528	0	WALK IN TAXABLE	SONNY	ENG	CAMRY	2010	X0813		7805		ASAP	06/17/2015 11:48PM	WALK IN TAXABLE		NotSent
108530	0	WALK IN TAXABLE	NANDY	STA-	CAMRY	1998					ASAP	06/22/2015 12:17PM	WALK IN TAXABLE		NotSent
108531	0	DARRYLL'S TOWING&AUTO REPAIR	ERICR	ALT	S10BLA	1999					ASAP	06/22/2015 04:35PM	DARRYLL'S TOWING&AUTO REPAIR		NotSent
108550	0	CASEY D'S	CASEYD	ENG	COROLL	2015					ASAP	07/02/2015 11:02AM	CASEY D'S		NotSent
108555	108555	WALK IN TAXABLE	LEEANN	TRA	SENTRA	2012	TEST				ASAP	07/06/2015 10:22PM	WALK IN TAXABLE		NotSent
108559	0	REITMAN AUTO PARTS	JONATHANM	ABS	CAMRY	1998	140924	FTWCAR			ASAP	07/08/2015 12:45PM	REITMAN AUTO PARTS		NotSent
108559	0	REITMAN AUTO PARTS	JONATHANM	ABS	CAMRY	1998	TEST	AUTLOC			ASAP	07/08/2015 12:45PM	REITMAN AUTO PARTS		NotSent
108575	108575	HICKMAN MOTORS, INC	TRACYHURST	ENG	CAMRY	2008	NOF				ASAP	07/13/2015 09:32PM	HICKMAN MOTORS, INC		NotSent



Building a Sustainable Future



# Work Order in Order Trakker

Dashboard Order Trakker Imaging Terminal - 1 Find and Sell Find and Sell Find and Sell

Find Interchange Parts Quotes Work Order / Invoice POs Credits / Returns

**Customer Information**  
Order by  
DARRYL'S TOWING&AUTO REF  
7443 LEBANON ST.  
CINCINNATI, OH. 45216  
ST. BEHINDSPORTPORT  
Email Address  
IM Address  
513-761-4326

**Ship To/Repairer**  
DARRYL'S TOWING&AUTO REF  
Contact  
7443 LEBANON ST.  
CINCINNATI, OH. 45216  
ST. BEHINDSPORTPORT  
Email Address  
IM Address  
Phone

**Work Order 999-108531**  
Enter Work Order #  
Enter Invoice #  
OEM

Order Date	Ship Date	Due Date	Ordering	Customer PO	Dismantler	Core	R/O #	Truck	Sales Person
06/22/2015	06/22/2015	06/22/2015	0						ERIC R

Remove	Part	Year	Model	Description	Total Price	Sale Price	Tax	Total Retail	Total Whole Sale	Warranty Description	Stock	Location	Interchange	Department
	ALT	1999	S10BLA	S10BLA 99 Int.717	\$50.00	\$50.00	No	\$0.00	\$0.00				717	

Parts	\$50.00
TAX	\$0.00
Freight	\$0.00
Warranty	\$0.00
Amt Paid	\$50.00
Total	\$50.00
Remaining	\$0.00

Payment	Cash
---------	------

ALT-717 DARRYL'S TOWING&AUTO REPAIR

WO	Date	Customer	SLS	Price	Grade
108531	06/22/15	DARRYL'S	ERIC R	\$50.00	

WO Invoice Note

Part Note

Private Part Note

Print Work Order

Print/Promote to Invoice

Edit

Close



## Order History

Show History

WO Number: 108531

Part: ALT

Model: S10BLA

Year 1999

Stock #:

Location:

Delivery Date: ASAP

Current Status: Delivered

OK

Status	Time to Assigned	Assigned To	Date Moved	Moved By	Duration
Dispatch			06/22/2015 04:35PM		21 days 17 hours 12 mins
Warehouse			07/14/2015 09:47AM	JORDAN P	0 hours 1 mins
RdySnd			07/14/2015 09:48AM	JORDAN P	0 hours 0 mins
Truck			07/14/2015 09:48AM	JORDAN P	0 hours 0 mins
Delivered			07/14/2015 09:48AM	JORDAN P	



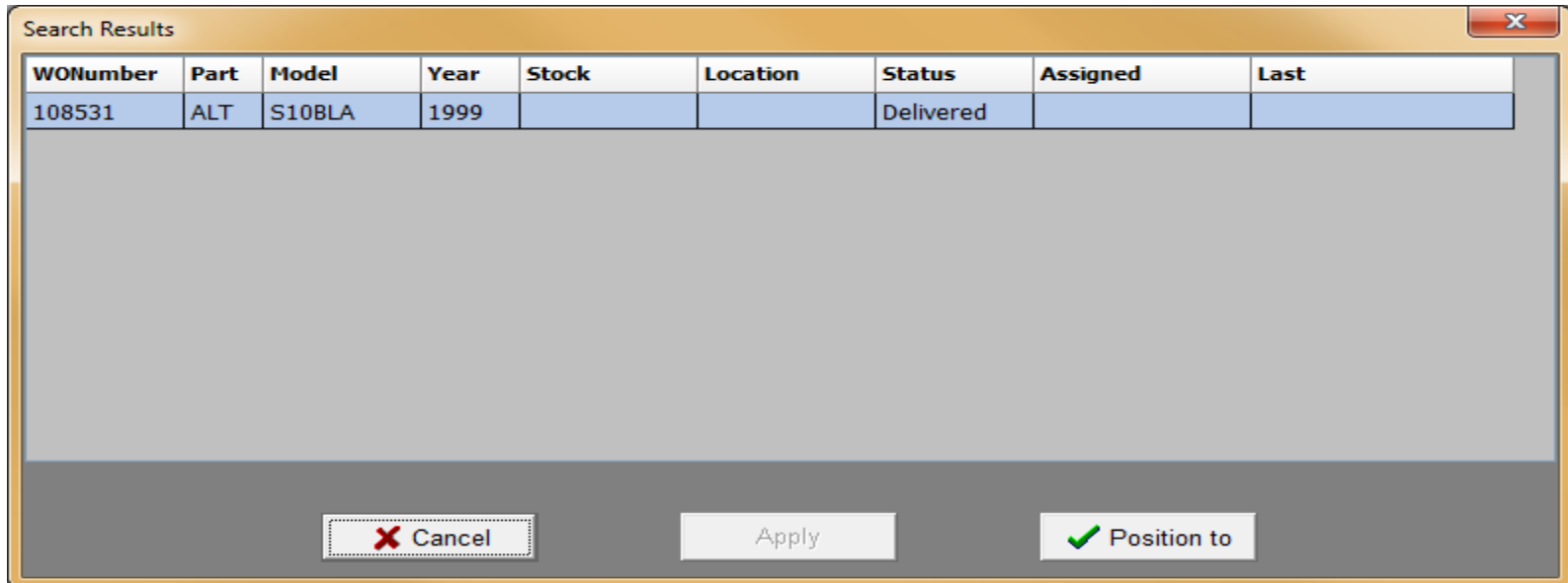
# Reporting in Order Trakker

- Truck Reporting
- Employee Performance
  - Yard
  - Warehouse
  - Brokered



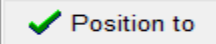


## Employee Tracking

- See which parts were picked from the warehouse, retrieved from the yard, or dismantled.
- See work currently assigned to an employee.



WONumber	Part	Model	Year	Stock	Location	Status	Assigned	Last
108531	ALT	S10BLA	1999			Delivered		

Buttons:  Cancel  Apply  Position to



*Building a Sustainable Future*



**OrderTrakker**

# Truck Routing in OrderTrakker

## Order Trakker - Truck Routing Report

Printed on 7/14/2015 at 10:03:31AM

Truck				# Parts to Deliver		
				3		
PO:				<u>Method Of Payment</u>		
Sold To: OH4326 DARRYL'S TOWING&AUTO REPAIR 7443 LEBANON ST. CINCINNATI,OH.45216 ST. BEHINDSPORT PORT				Cash		
Ship To: OH4326 DARRYL'S TOWING&AUTO REPAIR 7443 LEBANON ST. CINCINNATI,OH.45216 ST. BEHINDSPORT PORT				Signature _____		
Work Order	Part	Stock #	Part Description	PO	Invoice #	Invoice Total
<hr/>						
108531	ALTERNATOR		S10BLA 99 Int.717		0	
						\$50.00
<hr/>						
PO:				<u>Method Of Payment</u>		
Sold To: OH9376 TRAME MOTORS 1089 S. MIAMI ST. WEST MILTON,OH.,45383				Cash		
Ship To: OH9376 TRAME MOTORS 1089 S. MIAMI ST. WEST MILTON,OH.,45383				Signature _____		
Work Order	Part	Stock #	Part Description	PO	Invoice #	Invoice Total
<hr/>						
108574	ENGINE ASSEMBLY	140404	CAMRY 4 07 Int.65323B 2.4L, VIN E (5th digit, 2AZFEer		0	
						\$502.00
<hr/>						
PO:				<u>Method Of Payment</u>		
Sold To: R00193 WALK IN TAXABLE				Cash		
Ship To: R00193 WALK IN TAXABLE				Signature _____		
Work Order	Part	Stock #	Part Description	PO	Invoice #	Invoice Total
<hr/>						
108513	ENGINE ASSEMBLY	TESTDEP	CIVIC (Extra Sale) 08 Int.80918 1.8L, VIN 1 (8th digit, ga:		108513	
						\$530.00



# Track Orders Assigned to Salesperson

Search Results X

WONumber	Part	Model	Year	Stock	Location	Status	Assigned	Last
108513	ENG	CIVIC	2008	TESTDEP		Truck	FRANK	07_14_2015 10:03AM
108531	ALT	S10BLA	1999			Truck	FRANK	07_14_2015 10:02AM
108549	ENG	COROLL	2003	140129	32A25A	Warehouse	FRANK	07_02_2015 10:53AM
108570	TRA	CAMRY	2003	130824	9C04B	Warehouse	FRANK	07_10_2015 12:13PM
108574	ENG	CAMRY	2007	140404	9D030A	Truck	FRANK	07_14_2015 10:02AM

X Cancel Apply ✓ Position to

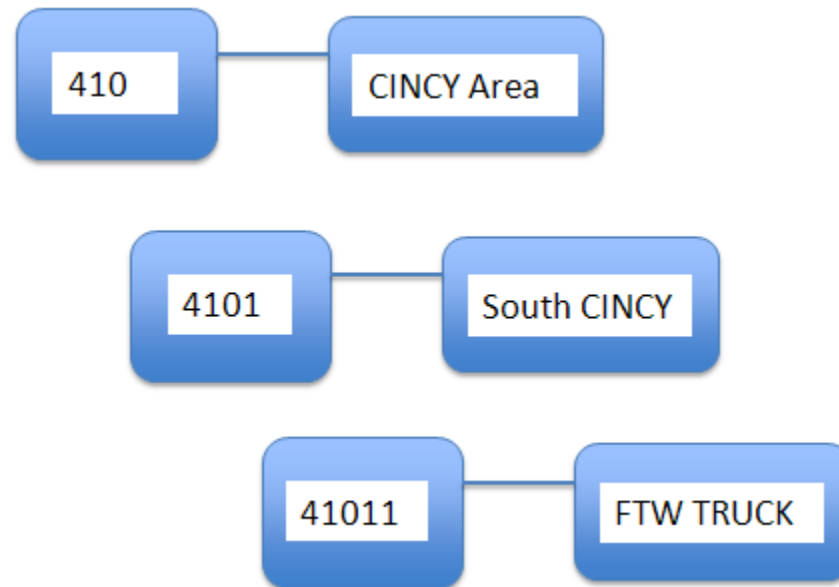
# Track Orders through Multiple Yards

Select Checkmate Yards

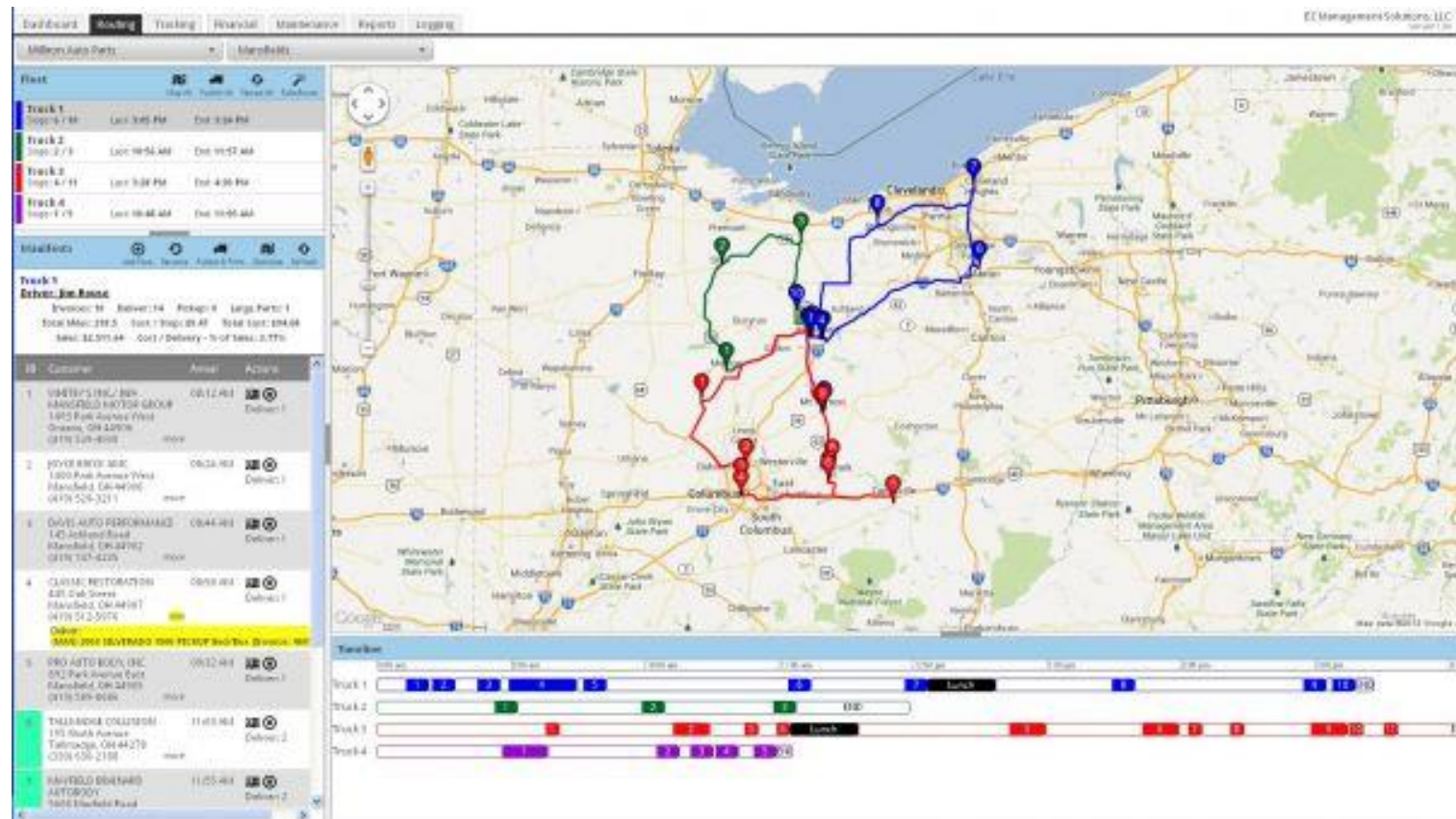
Yards	Sales	Inventory
996	<input type="checkbox"/>	<input type="checkbox"/>
998	<input type="checkbox"/>	<input type="checkbox"/>
999	<input checked="" type="checkbox"/>	<input checked="" type="checkbox"/>
1723	<input type="checkbox"/>	<input type="checkbox"/>

## Automated Truck Assignment

- Set a ZIP code map to automatically assigned parts to the appropriate truck.



## EZ Route







## Combining Barcoding & Order Trakker

- With locations, you can tell where parts are in the production process and each of their exact locations.
- Scan items onto trucks.
- Automatically assign work orders to whoever is logged into the scanner.



## **Barcoding – 3 Types**

- Real Time Barcoding (wireless, stand-alone)
- Wireless Star Network
- Traditional wired Barcoding

# Real Time Barcoding





## Real Time Barcoding

- Base connected to a PC
- 100ft radius around base
- Instantly updates Checkmate

# Wireless Star Network





## Wireless Star Network

- Create a network that allows you to barcode anywhere in your warehouse.
- Uses repeaters to create a wireless network.



# Traditional Wired Barcoding





## Thanks for Attending!

- Most presentations can be viewed, downloaded, or printed at:

**[carpartconference.com/presentations](http://carpartconference.com/presentations)**

- Contact us:
  - Eric Robbins: [EricR@Car-Part.com](mailto:EricR@Car-Part.com)
  - Jordan Palmer: [Jordan@Car-Part.com](mailto:Jordan@Car-Part.com)

**#carpartrocks**