

# Checkmate Inventory Pro New Features: 2023R1

# Contents

<b>Overview</b> .....	<b>3</b>
<b>Updating Discontinued Parts and Models</b> .....	<b>3</b>
Finding Parts with Discontinued Models.....	3
Updating Parts with Discontinued Model Names .....	4
Finding Parts with Discontinued Part Codes.....	7
Updating Parts with Discontinued Codes.....	8
Disc Part Note and Disc Model Note Information Columns.....	10
<b>Displayed and Searched Inventory</b> .....	<b>11</b>
<b>Restock Parts in Inventory Pro with the RESTOCK View</b> .....	<b>12</b>
<b>Printing Parts on the Find Tab</b> .....	<b>14</b>
<b>Graded Date/Time Column</b> .....	<b>14</b>
<b>Bulk Editing Added to More Information Columns</b> .....	<b>15</b>
<b>Bid Amount Field Auto-Calculates</b> .....	<b>15</b>
<b>\$martList Field in Add/Edit Window</b> .....	<b>16</b>
<b>Dismantle to Field/Column and the Dismantling Instructions Report</b> .....	<b>16</b>
Dismantle to Column.....	17
<b>Paint Codes in Part Descriptions</b> .....	<b>18</b>
<b>Stock # Searches in a New Inventory Pro Tab</b> .....	<b>18</b>
<b>Show Related STOCK Images Button Added to Inventory Pro</b> .....	<b>20</b>
<b>Getting Help</b> .....	<b>21</b>
Online Support using Car-Part Messaging (iCPM) .....	21

# Overview

In this release, the most impactful enhancements to Inventory Pro deal with part grading—including new standards for grading different part types, and new audits for detecting inconsistencies in your inventory data. These part grading enhancements are covered in another guide: [Part Grading Improvements and New Features: Checkmate, Partmate, and Photomate](#).

This guide covers the enhancements to Inventory Pro that *do not* concern part grading. These additional enhancements make it faster and easier to update discontinued parts and models and make restocking easier with a dedicated RESTOCK View. This build also introduces enhancements which provide you with easy access to useful info while managing your inventory.

## Updating Discontinued Parts and Models

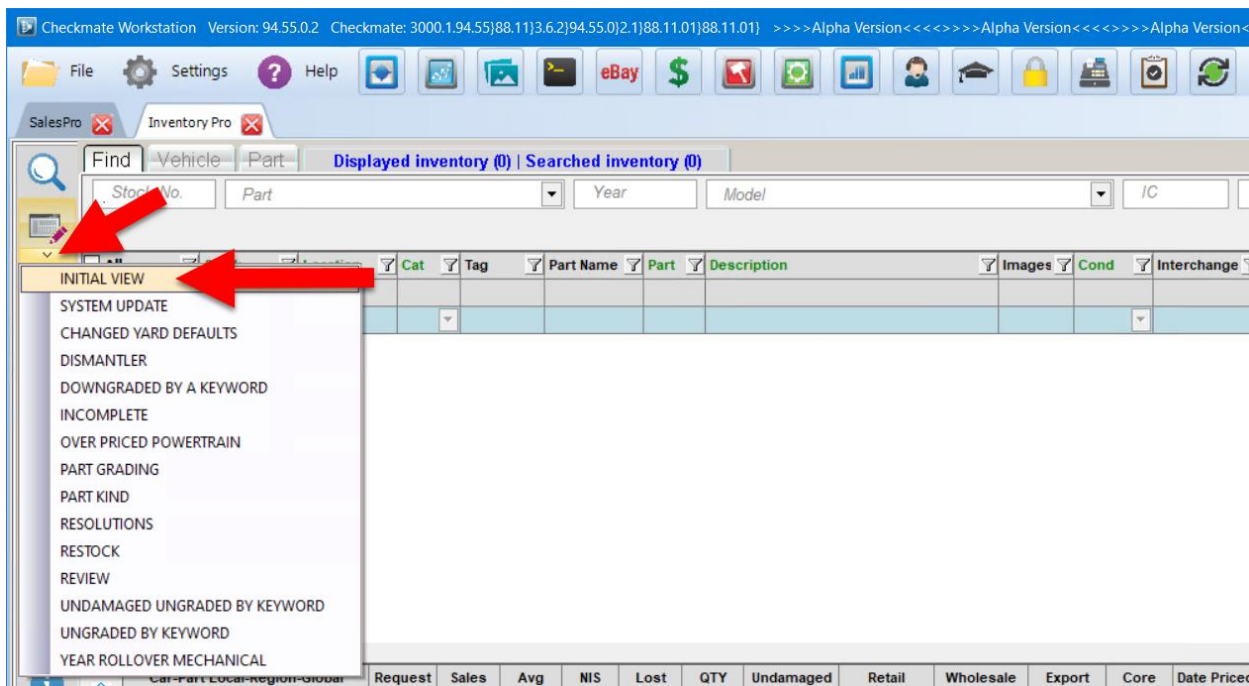
This release makes it quicker and easier to find and update parts in your inventory that have discontinued part codes, or discontinued model names. In most cases, when a part or model is discontinued, Checkmate automatically updates parts accordingly (including reassigning interchange) when a VIN is available, *but* there are cases where Checkmate cannot update the part code or model automatically. They must be updated manually, and then interchange must be assigned under the new part code or model. We recommend you search for discontinued models/parts as the first step when reviewing Resolution parts.

The steps below explain how to search for parts with discontinued codes or models and update the information.

### Finding Parts with Discontinued Models

To find parts with discontinued model names:

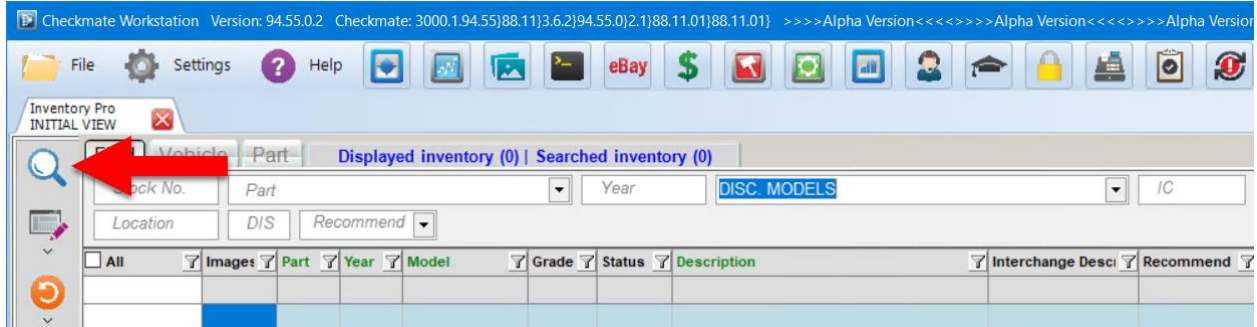
1. Start in Inventory Pro. We recommend that you use the INITIAL VIEW for this workflow. If you are not in the INITIAL VIEW, simply click the Select View drop-down, and choose **INITIAL VIEW** from the list of Views.



- Once the INITIAL VIEW is displaying, type “DISC. Models” in the **Model** search field.



- Click the magnifying glass icon to search.



- Your search results appear, displaying only parts with discontinued model names.

If you don't have any parts in your search results, that means you don't have parts with discontinued models in your inventory.

## Updating Parts with Discontinued Model Names

To help you update parts with discontinued model names, the **Disc Model Note** column has been added. To turn this column on:

- Right-click on any column header. The **Columns** window opens, displaying a list of available columns.
- Find the **Disc Model Note** option and check the box to turn it on.
- Click **Close**.

Refer to the **Disc Model Note** column for help determining the updated part code. Then, to update an individual part, double-click the part line in the **Model** column, and enter the updated model name.

Part	Year	Model
EDIT PART	EDIT YEAR	EDIT MODEL
AUT	1999	DISECL
AUT	1986	BMW325
AUT	1984	MB300
BAG	1995	DODVAN
BCF	2010	DSROGU
BDR-L	1998	DODVAN
DWM-L	1999	DODVAN
FDW-R	1986	DODVAN
FEN-L	2010	NISSAN R
FRG-L	1989	NISSAN ROGUE EXCEPT SPOF
FTK	2003	NISSAN SCARGO
HLP-R	2013	NISSAN SENTRA
HLP-L	2011	NISSAN SILVIA
HOD	2013	NISSAN SKYLINE
ICF	2016	NISSAN STANZA
		NISSAN STANZA VAN

To bulk edit multiple parts with the same discontinued model name:

1. Look to the **Stock** column to verify that each part comes from the same vehicle. Check the box for each part in the **Select** column.

<input type="checkbox"/> All	<input type="checkbox"/> Images	<input type="checkbox"/> Part	<input type="checkbox"/> Year	<input type="checkbox"/> Model	<input type="checkbox"/> Grade	<input type="checkbox"/> Status	<input type="checkbox"/> Description	<input type="checkbox"/> Interchange	<input type="checkbox"/> Recommend	<input type="checkbox"/> Miles	<input type="checkbox"/> ARADamage	<input type="checkbox"/> Cat	<input type="checkbox"/> Stock
Select		Edit Part	Edit Year	Edit Model			Edit Description					Edit Cat	Edit Stock
<input type="checkbox"/> 1		AUT	1999	DISECL			* - ? K(FIRE) ,2DR,CONVERT,F			0			T068
<input type="checkbox"/> 2		AUT	1986	BMW325			* -254K,2DR,"E";SEDN;SSPD;S			254000			N126
<input type="checkbox"/> 3		AUT	1984	MB300			* -172K,4DR;SEDN;AT;HIT F,G			172000			N219
<input type="checkbox"/> 4		BAG	1995	DODVAN	A+		! Print Remedied Cert if sell ! (R						34D08B
<input type="checkbox"/> 5		BCF	2010	DSROGU	A+		exc Krom NEW AFTERMARKET	exc Krom		0000		W	TYG10
<input checked="" type="checkbox"/> 6		BDR-L	1998	DODVAN	A+		dbl, LH-hngd, w/wind-GRN,FW					W	C1045
<input checked="" type="checkbox"/> 7		DWM-L	1998	DODVAN	A+		LH FULL SIZE DODGE VAN Or					W	C1045
<input checked="" type="checkbox"/> 8		FDW-R	1998	DODVAN	A+		#D4469,D4470- RH UC1045					W	C1045
<input type="checkbox"/> 9		FEN-L	2010	DSROGU	A+		LH NEW AFTERMARKET CAPA	LH		0000	000	W	TYG10
<input type="checkbox"/> 10		FRG-L	1989	DODVAN	A+		electric-LH					W	PO715
<input type="checkbox"/> 11		FTK	2003	DISOUT	A+		NEW AFTMKT!!	AWD	Push			W	AFT16I

2. Click **Edit Model** in the **Model** column to bulk edit the parts.

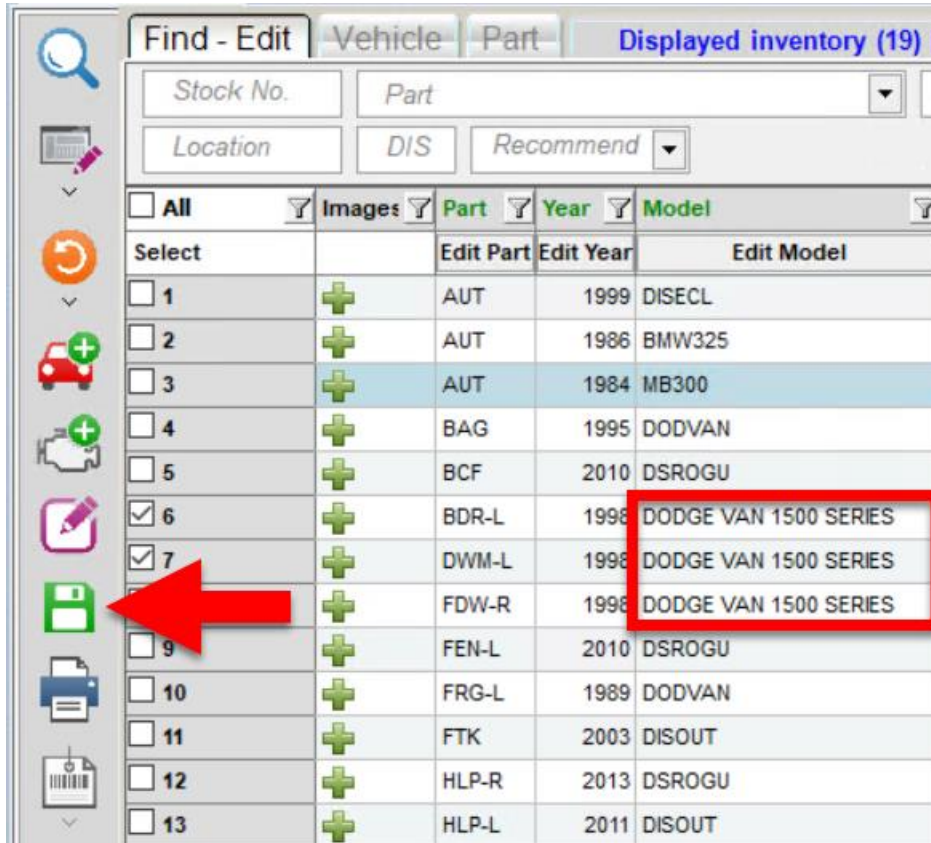
<input type="checkbox"/> All	<input type="checkbox"/> Images	<input type="checkbox"/> Part	<input type="checkbox"/> Year	<input type="checkbox"/> Model
Select		Edit Part	Edit Year	Edit Model
<input type="checkbox"/> 1		AUT	1999	DISE
<input type="checkbox"/> 2		AUT	1986	BL
<input type="checkbox"/> 3		AUT	1984	MB3
<input type="checkbox"/> 4		BAG	1995	DODVAN
<input type="checkbox"/> 5		BCF	2010	DSR
<input checked="" type="checkbox"/> 6		BDR-L	1998	DODVAN

3. In the window that appears, enter the updated model name, and click **Accept**.

Bulk Editing Model
✕

Model DODGE VAN 1500 SERIES

4. The updated model name displays in the **Model** column for each part. Click the Save icon to make the changes permanent.



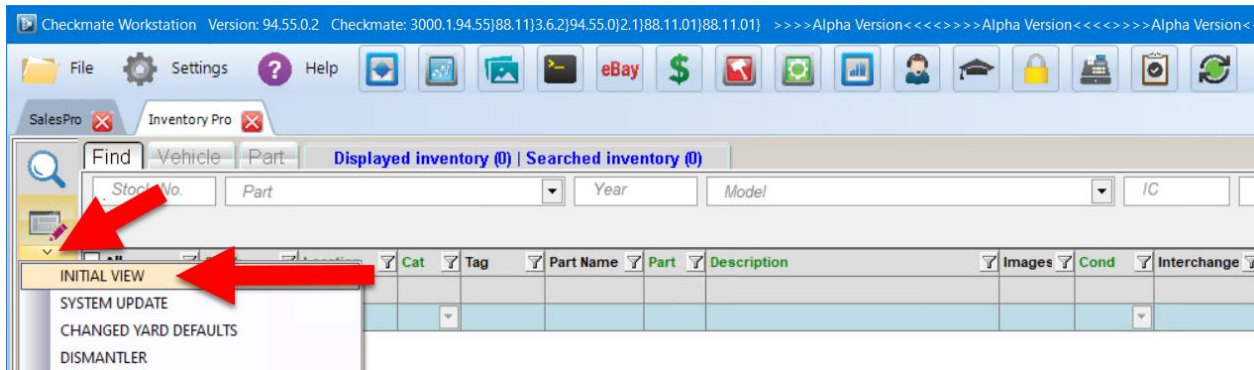
Find - Edit		Vehicle	Part	Displayed inventory (19)	
Stock No.	Part	Location	DIS	Recommend	
All	Images	Part	Year	Model	
Select		Edit Part	Edit Year	Edit Model	
<input type="checkbox"/>	+	AUT	1999	DISECL	
<input type="checkbox"/>	+	AUT	1986	BMW325	
<input type="checkbox"/>	+	AUT	1984	MB300	
<input type="checkbox"/>	+	BAG	1995	DODVAN	
<input type="checkbox"/>	+	BCF	2010	DSROGU	
<input checked="" type="checkbox"/>	+	BDR-L	1998	DODGE VAN 1500 SERIES	
<input checked="" type="checkbox"/>	+	DWM-L	1998	DODGE VAN 1500 SERIES	
<input type="checkbox"/>	+	FDW-R	1998	DODGE VAN 1500 SERIES	
<input type="checkbox"/>	+	FEN-L	2010	DSROGU	
<input type="checkbox"/>	+	FRG-L	1989	DODVAN	
<input type="checkbox"/>	+	FTK	2003	DISOUT	
<input type="checkbox"/>	+	HLP-R	2013	DSROGU	
<input type="checkbox"/>	+	HLP-L	2011	DISOUT	

5. Now that the models are updated, you can assign interchange to the parts, using the RESOLUTIONS View. For more information, please see the [How to Review Resolution Parts](#) guide.

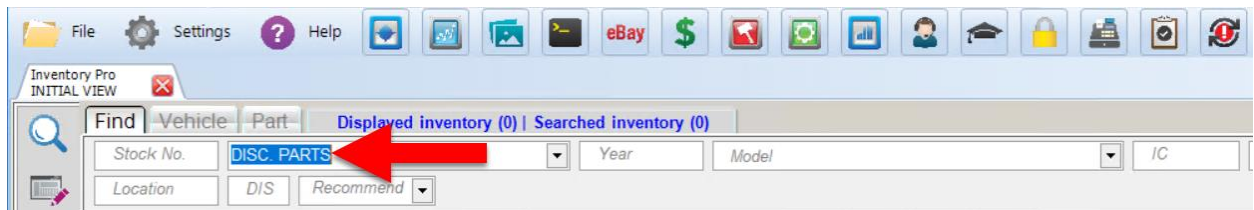
## Finding Parts with Discontinued Part Codes

To find parts with discontinued part codes:

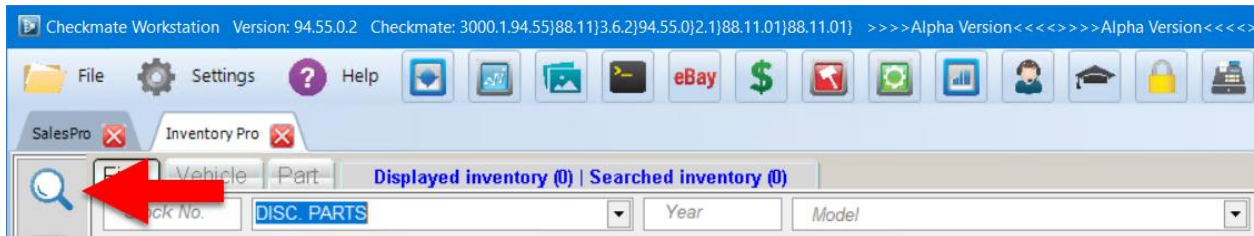
1. Start in Inventory Pro. We recommend that you use the INITIAL VIEW for this workflow. If you are not in the INITIAL VIEW, simply click the Select View drop-down, and choose **INITIAL VIEW** from the list of Views.



2. Once the INITIAL VIEW is displaying, type "DISC. PARTS" in the **Part** search field.



3. Click the magnifying glass icon to search.



4. Your search results appear, displaying only parts with discontinued part codes. These discontinued codes display in the **Part** column. In this column, hover your mouse over any part line to see the updated part code.

<input type="checkbox"/> All	<input type="checkbox"/> Images	<input type="checkbox"/> Part	<input type="checkbox"/> Year	<input type="checkbox"/> Model
Select		Edit Part	Edit Year	Edit Model
<input type="checkbox"/> 1		AMP	2006	BMW750
<input type="checkbox"/> 2		AMP	2002	CLK
<input type="checkbox"/> 3		ATC	DISCONTINUED USE TCO	
<input type="checkbox"/> 4		ATC	1992	VL240
<input type="checkbox"/> 5		ATC	1992	ACCORD
<input type="checkbox"/> 6		BLT-L	2001	ELANTR
<input type="checkbox"/> 7		CCF	1992	ANY
<input type="checkbox"/> 8		CCF	1992	SUMMIT

## Updating Parts with Discontinued Codes

To help you update parts with discontinued part codes, the **Disc Part Note** column has been added. To turn this column on:

1. Right-click on any column header. The **Columns** window opens, displaying a list of available columns.
2. Find the **Disc Part Note** option and check the box to turn it on.
3. Click **Close**.

Refer to the **Disc Part Note** column for help determining the updated part code. Then, to update an individual part, double-click the part line in the **Part** column, and enter the updated code.

<input type="checkbox"/> All	Images	Part	Year	Model
Select		Edit Part	Edit Year	Edit Model
<input type="checkbox"/> 1		AMP	2006	BMW750
<input type="checkbox"/> 2		RDO	2002	CLK
<input type="checkbox"/> 3		RDO	1990	SUPRA
<input type="checkbox"/> 4		RDR	1982	VL240
<input type="checkbox"/> 5		RDS	1979	ACCORD
<input type="checkbox"/> 6		RDW	2001	ELANTR
<input type="checkbox"/> 7		RDX	1999	ANY
<input type="checkbox"/> 8		REF	1992	SUMMIT
<input type="checkbox"/> 9		REP	1988	INTEGR
<input type="checkbox"/> 10		RES	2015	FOCNRS

To bulk edit multiple parts with the same discontinued part code:

1. Check the box for each part with the code in the **Select** column to select each one.

<input type="checkbox"/> All	Images	Part	Year	Model
Select		Edit Part	Edit Year	Edit Model
<input type="checkbox"/> 1		AMP	2006	BMW750
<input type="checkbox"/> 2		RDO	2002	CLK
<input checked="" type="checkbox"/> 3		ATC	1990	SUPRA
<input checked="" type="checkbox"/> 4		ATC	1982	VL240
<input checked="" type="checkbox"/> 5		ATC	1979	ACCORD
<input type="checkbox"/> 6		BLT-L	2001	ELANTR
<input type="checkbox"/> 7		CCF	1999	ANY
<input type="checkbox"/> 8		CCF	1992	SUMMIT
<input type="checkbox"/> 9		CCF	1988	INTEGR



2. Click **Edit Part** in the **Part** column to bulk edit the parts.

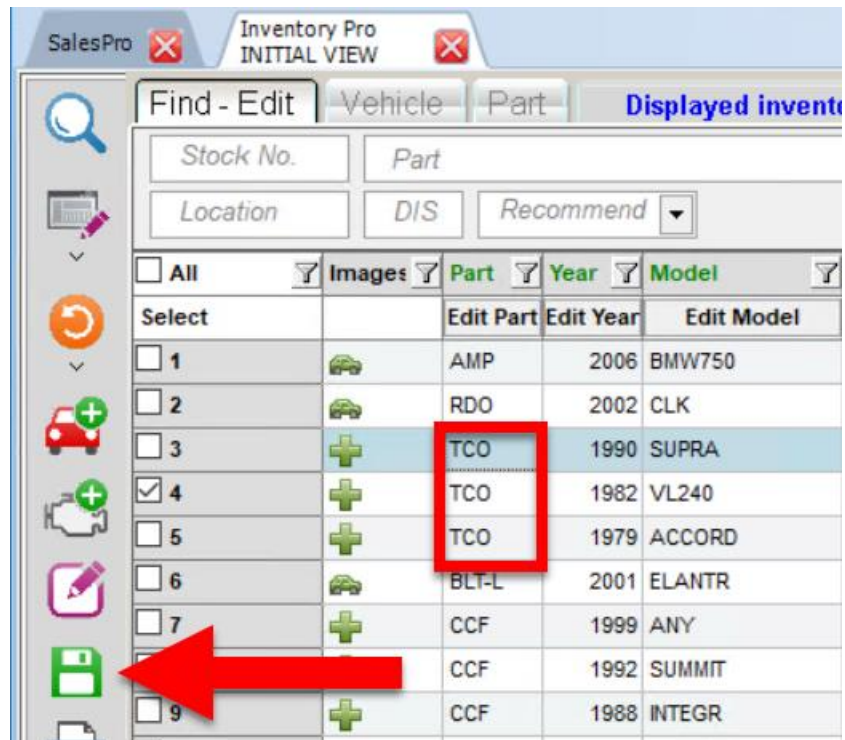
<input type="checkbox"/> All		Images	Part	Year	Model
Select			Edit Part	Edit Year	Edit Model
<input type="checkbox"/> 1			AMP	2006	BMW750
<input type="checkbox"/> 2			RDO	2002	CLK
<input checked="" type="checkbox"/> 3			AT	1990	SUPRA
<input checked="" type="checkbox"/> 4			AT	1982	VL240
<input checked="" type="checkbox"/> 5			AT	1979	ACCORD
<input type="checkbox"/> 6			BLT-L	2001	ELANTR

3. In the window that appears, enter the updated code, and click **Accept**.



A dialog box titled "Bulk Editing Part" with a close button (X) in the top right corner. It features a "Part" dropdown menu with "TCO" selected. To the right of the dropdown are two buttons: "Accept" with a green checkmark icon and "Cancel" with a red X icon. A red arrow points from the "Edit Part" column of the table above to the "Accept" button.

4. The updated part code displays in the **Part** column for each part. Click the Save icon to make the changes permanent.



The screenshot shows the "Inventory Pro INITIAL VIEW" window. At the top, there are tabs for "Find - Edit", "Vehicle", and "Part", with "Part" selected. Below the tabs are search fields for "Stock No.", "Part", "Location", "DIS", and "Recommend". The main table is the same as in the previous image, but now the "Part" column for rows 3, 4, and 5 contains the updated code "TCO". A red box highlights these "TCO" entries. A red arrow points from the "Save" icon (a green floppy disk) in the left sidebar to the table.

<input type="checkbox"/> All		Images	Part	Year	Model
Select			Edit Part	Edit Year	Edit Model
<input type="checkbox"/> 1			AMP	2006	BMW750
<input type="checkbox"/> 2			RDO	2002	CLK
<input type="checkbox"/> 3			TCO	1990	SUPRA
<input checked="" type="checkbox"/> 4			TCO	1982	VL240
<input type="checkbox"/> 5			TCO	1979	ACCORD
<input type="checkbox"/> 6			BLT-L	2001	ELANTR
<input type="checkbox"/> 7			CCF	1999	ANY
<input type="checkbox"/> 8			CCF	1992	SUMMIT
<input type="checkbox"/> 9			CCF	1988	INTEGR



5. Now that the codes are updated, you can assign interchange to the parts, using the RESOLUTIONS View. For more information, please see the [How to Review Resolution Parts](#) guide.

## Disc Part Note and Disc Model Note Information Columns

As mentioned in the steps above, there are now 2 new columns in Inventory Pro that help you identify and update discontinued parts and models.

The **Disc Part** and **Disc Model** columns show either **Y** for Yes (as in “Yes, this discontinued”) or **N** for No (as in “No, this is not discontinued.”) The **Disc Part Note** and **Disc Model Note** columns provide info for updating the model name or part type.

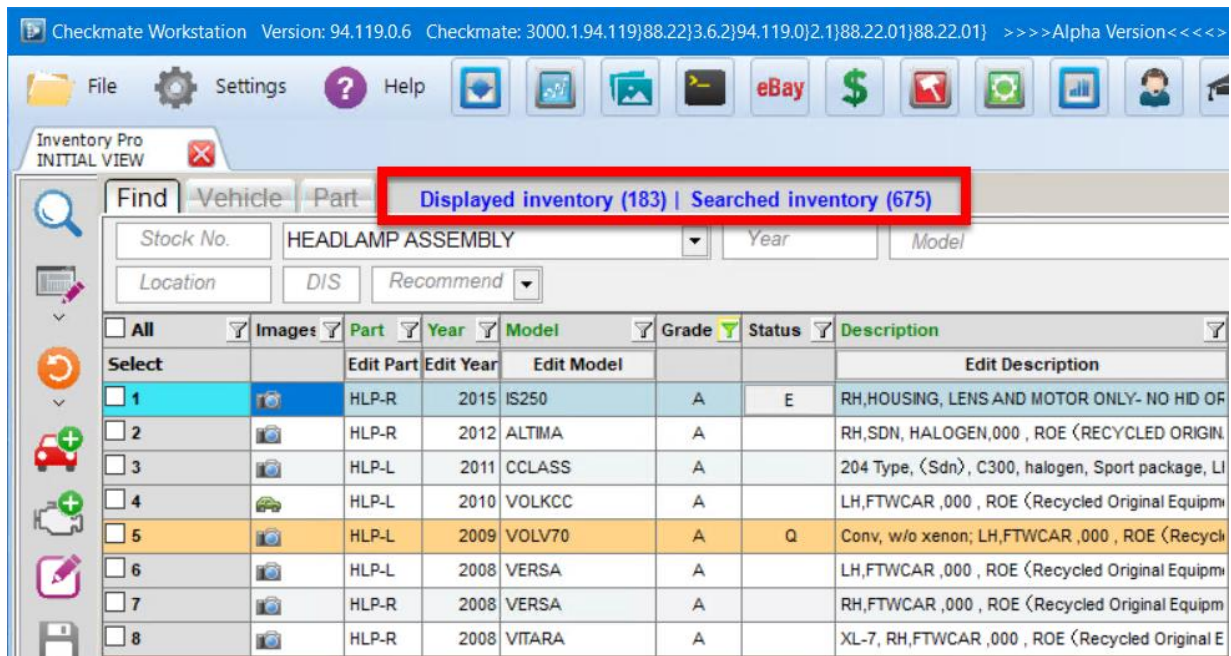
Disc Model 	Disc Model Note 
N	
N	
Y	Interchange was split for Rogue Sport and except Sport (ROGUE, RSPORT)

Disc Part 	Disc Part Note 
Y	Discontinued. Use TCO (Transmission Oil Cooler) for Transmission Cooler Interchange.
Y	Discontinued. Use FSB (Front Seat Belt) or RSB (Rear Seat Belt) for interchange.
Y	Discontinued. Use ECM (Electric Cooling Motor) for interchange.
Y	Discontinued. Use DPN for Dash Panel interchange.

# Displayed and Searched Inventory

This release introduces feature in Inventory Pro that shows how many parts are currently displayed in your search results, and the total number of parts in the searched inventory.

- **Displayed Inventory** is the number of parts currently showing in your search results. This includes all parts that meet your search criteria *minus* any parts that have been filtered out using the information columns.
- **Searched Inventory** is the total number of parts that meet your search criteria. Using filters in the information columns will not affect your **Searched Inventory**.




For example, let's say you searched your inventory for headlamp assemblies. Your search results initially included 675 parts, so your **Displayed Inventory** and your **Searched Inventory** would initially both display 675. If you then filtered your results to only show A grade parts (using the filter on the **Grade** column), the **Displayed Inventory** would become a lower number. If you have 183 A grade headlamp assemblies, then the **Displayed Inventory** would display 183, and the **Searched Inventory** would display 675 (the total original search results).

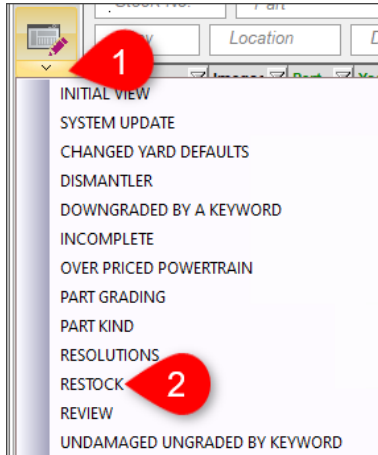
# Restock Parts in Inventory Pro with the RESTOCK View

In Inventory Pro, Views set the configuration of the search fields and information columns on the **Find** tab and may also populate search criteria for you.


The new RESTOCK View is designed to help you restock parts (which replaces the **Restocking** function in Checkmate Retro). With the RESTOCK View you can quickly search for parts that have a **Location** of **RESTCK** and then restock those parts.

Here's how it works:

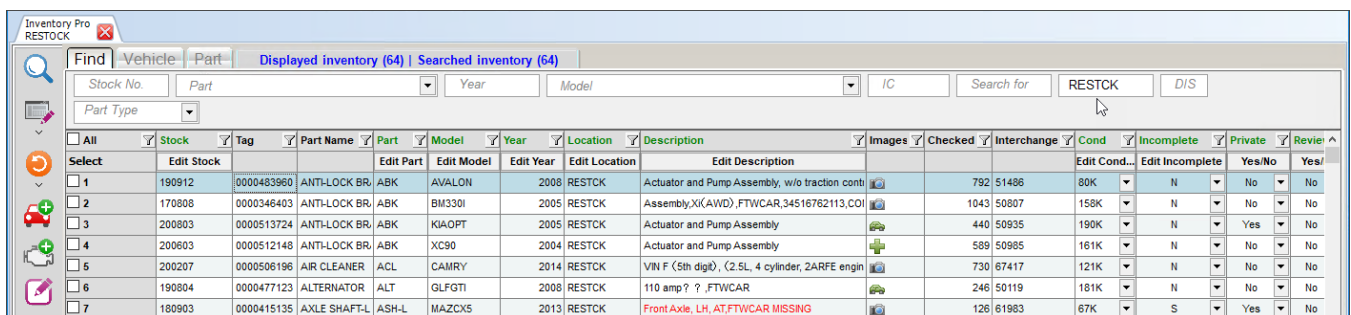
1. On the **Find** tab, click the down arrow on the select View button. 
2. Select **RESTOCK**.










The search fields and information columns are rearranged according to the View, and the **Location** search field is populated with **RESTCK**. (It may take several seconds to load.)


3. (Optional) If desired, limit your search further by entering criteria in the other available search fields.
4. Click the magnifying glass button  to search your inventory according to the search fields.

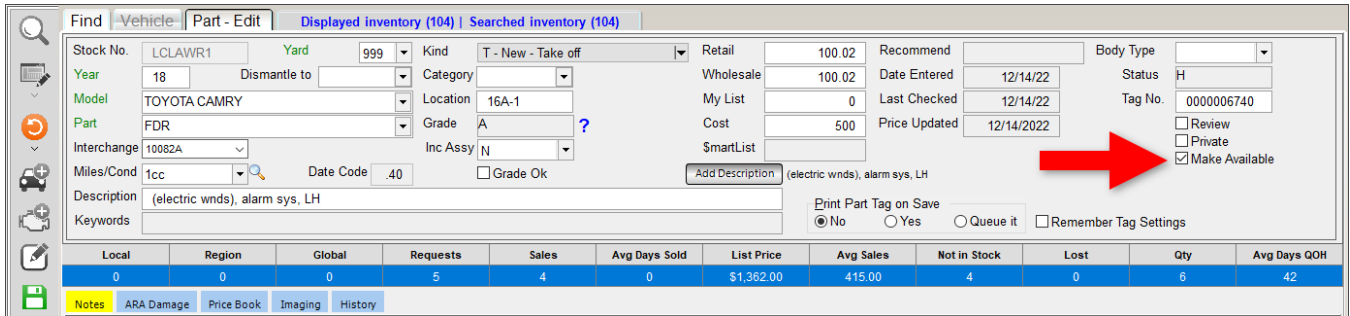
Your search results display parts that need to be restocked.



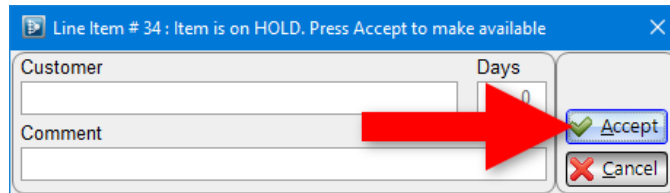
Select	Edit Stock	Tag	Part Name	Part	Model	Year	Location	Description	Images	Checked	Interchange	Cond	Edit Cond...	Edit Incomplete	Yes/No	Review
<input type="checkbox"/>	1	190912	0000483960	ANTI-LOCK BR	ABK	AVALON	2008	RESTCK	Actuator and Pump Assembly, w/o traction conti		792	51496	80K	N	No	No
<input type="checkbox"/>	2	170808	0000346403	ANTI-LOCK BR	ABK	BM330I	2005	RESTCK	Assembly,X(K(AWD),FTWCAR,34516762113,COI		1043	50807	158K	N	No	No
<input type="checkbox"/>	3	200803	0000513724	ANTI-LOCK BR	ABK	KJAOPT	2005	RESTCK	Actuator and Pump Assembly		440	50935	190K	N	Yes	No
<input type="checkbox"/>	4	200603	0000512148	ANTI-LOCK BR	ABK	XC90	2004	RESTCK	Actuator and Pump Assembly		589	50985	161K	N	No	No
<input type="checkbox"/>	5	200207	0000506196	AIR CLEANER	ACL	CAMRY	2014	RESTCK	VIN F (5th digt), (2.5L, 4 cylinder, 2ARFE engin		730	67417	121K	N	No	No
<input type="checkbox"/>	6	190804	0000477123	ALTERNATOR	ALT	QLFGTI	2008	RESTCK	110 amp ? , FTWCAR		246	50119	181K	N	No	No
<input type="checkbox"/>	7	180903	0000415135	AXLE SHAFT-L	ASH-L	MAZCX5	2013	RESTCK	Front Axle, LH, AT,FTWCAR MISSING		126	61983	67K	S	Yes	No

5. Choose a part to work with. Click inside the **Location** field and type the new location.

6. (Optional) If the part is on hold (has a status of **H**) and you want to make it available for sale again:
  - a. Click to select the part, and click the edit button  to open the part for editing. (If you've already made changes to other parts on the **Find** tab, you may be prompted to save your changes.)
  - b. On the **Part – Edit** screen, click the **Make Available** checkbox.



- c. A window displays saying the item is on hold. Click **Accept** to remove the part from being on hold and make the part available for sale.




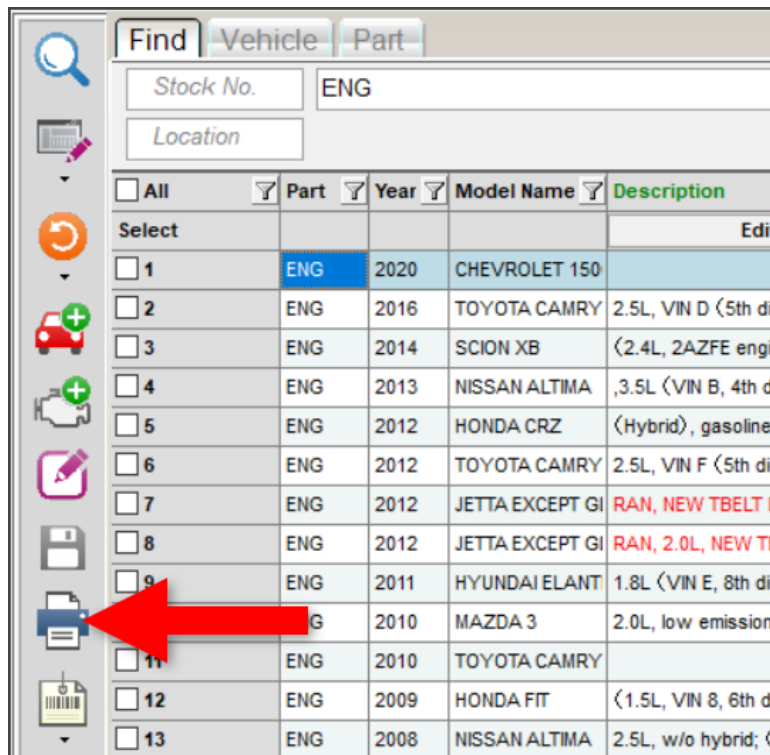
- d. Click the save button  to return to the **Find** tab.

7. Repeat steps 5 & 6 for each part you want to restock.

8. When you're finished restocking parts, click the save button. 

## Printing Parts on the Find Tab

On the **Find** tab in Inventory Pro, the printer button  has been updated. Previously, it printed a snapshot of your screen. Now, you can click this button to print a report of the parts that are displayed on the tab.



The screenshot shows the 'Find' tab in Inventory Pro. The search criteria are 'Stock No.' set to 'ENG' and 'Location' is empty. The table below shows a list of parts with columns for 'All', 'Part', 'Year', 'Model Name', and 'Description'. A red arrow points to the printer icon in the left sidebar.

<input type="checkbox"/>	All	<input type="checkbox"/>	Part	<input type="checkbox"/>	Year	<input type="checkbox"/>	Model Name	<input type="checkbox"/>	Description
<input type="checkbox"/>	Select								Edi
<input type="checkbox"/>	1		ENG		2020		CHEVROLET 150		
<input type="checkbox"/>	2		ENG		2016		TOYOTA CAMRY		2.5L, VIN D (5th di
<input type="checkbox"/>	3		ENG		2014		SCION XB		(2.4L, 2AZFE engi
<input type="checkbox"/>	4		ENG		2013		NISSAN ALTIMA		,3.5L (VIN B, 4th d
<input type="checkbox"/>	5		ENG		2012		HONDA CRZ		(Hybrid), gasoline
<input type="checkbox"/>	6		ENG		2012		TOYOTA CAMRY		2.5L, VIN F (5th di
<input type="checkbox"/>	7		ENG		2012		JETTA EXCEPT GI		RAN, NEW TBELT I
<input type="checkbox"/>	8		ENG		2012		JETTA EXCEPT GI		RAN, 2.0L, NEW TE
<input type="checkbox"/>	9		ENG		2011		HYUNDAI ELANT		1.8L (VIN E, 8th di
<input type="checkbox"/>	10		ENG		2010		MAZDA 3		2.0L, low emission
<input type="checkbox"/>	11		ENG		2010		TOYOTA CAMRY		
<input type="checkbox"/>	12		ENG		2009		HONDA FIT		(1.5L, VIN 8, 6th d
<input type="checkbox"/>	13		ENG		2008		NISSAN ALTIMA		2.5L, w/o hybrid; (<

## Graded Date/Time Column

This release to Checkmate introduces the **Graded Date / Time** column, which shows the date and time that a part was last graded.

Graded Date/Time <input type="checkbox"/>
06/09/2022 15:29:31
06/09/2022 15:29:33
06/09/2022 15:29:35
06/09/2022 15:29:35
06/09/2022 15:29:36
06/09/2022 15:29:37

# Bulk Editing Added to More Information Columns

In this release, we've added the ability to bulk edit the following information columns in Inventory Pro:

- Dismantle to
- Grade OK
- Kind
- Incomplete Assembly
- Model
- My List
- Part
- Year

Any column that can be bulk edited will have a green column header.

Select	Images	Part	Model	Year	Grade	Status	Description	Interchange Desci	Recommend	Miles	ARADamage	Cat	Stock	Location
		Edit Part	Edit Model	Edit Year			Edit Description					Edit Cat	Edit Stock	Edit Location
<input type="checkbox"/>		FDR-R CIVIC	CIVIC	2018	C		RH,2DR,TURBO, BALCK,PAINT CODEisNH731PX, G	(electric), Coupe, keyle		0		W	191010	16A065
<input type="checkbox"/>		FDR-L CAMRY	CAMRY	2016	A+	WQ	(electric windows), LH	(electric windows), LH			000		KELLY123	
<input type="checkbox"/>		FDR-R MITLAN	MITLAN	2015	C	A	RH,ELE,NIQ,6L1,WHITE ,FTWCAR Recycled Origin			61000		W	181001	16BDIS
<input type="checkbox"/>		FDR-L VOLT	VOLT	2014	X		LH , THIS DOOR IS BENT AT THE BOTTOM PLEASE	LH				W	PO13148	16A011
<input type="checkbox"/>		FDR-L SPARK	SPARK	2013	A		(electric), LH LH VIN#KL8CD6S96DC502296	(electric), LH				W	PO12601	20A51A
<input type="checkbox"/>		FDR-R ROGUE	ROGUE	2013	C	A	NIQ,6L1,(electric), RH,GRY,PAINT CODEisK51,FTW	(electric), RH		84045		W	191101	32B-DIS
<input type="checkbox"/>		FDR-L ALTMA	ALTMA	2012	A+	A	(electric), Sdn, LH,BLU ,PAINT CODEisRAB, GREA	(electric), Sdn, LH		110468		W	200113	31BDIS
<input type="checkbox"/>		FDR-R ALTMA	ALTMA	2012	A	A	(electric), SP1, Sdn, RH, w/o automatic up and dow	(electric), Sdn, RH, w/c		110468		W	200113	31BDIS
<input type="checkbox"/>		FDR-R FIT	FIT	2012	A		Recycled Original Equipment (ROE)			26948		W	160902	20A022
<input type="checkbox"/>		FDR-L KIAFOR	KIAFOR	2012	A+	A	Sdn, NO GLASS,manual windows, LH,BLK,EB,FTW	Sdn, manual windows,		228000		W	190301	16A1-DIS
<input type="checkbox"/>		FDR-L SONATA	SONATA	2011	C	A	NIQ,4L2,(electric), VIN C (8th digit), LH,MAR, PAI	(electric), VIN C (8th d		105137		W	191213	31BDIS
<input type="checkbox"/>		FDR-R SONATA	SONATA	2011	C	A	NIQ,5D2,(electric), VIN C (8th digit), RH,MAR, PAI	(electric), VIN C (8th d		105137		W	191213	31BDIS
<input type="checkbox"/>		FDR-L SONATA	SONATA	2011	A	A	4C1,(electric), VIN C (8th digit), LH,BLUE ,PAINT C	(electric), VIN C (8th d		120920		W	200108	32C-DIS
<input type="checkbox"/>		FDR-R SONATA	SONATA	2011	B	A	5P2,(electric), VIN C (8th digit), RH,BLUE ,PAINT C	(electric), VIN C (8th d		120920		W	200108	32C-DIS
<input type="checkbox"/>		FDR-L KIAFOR	KIAFOR	2011	A+	A	Sdn, electric windows, LH,SLVR 3D,FTWCAR Rec	Sdn, electric windows,		101170		W	190410	15A1-DIS
<input type="checkbox"/>		FDR-R KIAFOR	KIAFOR	2011	A+	A	Sdn, electric windows, RH,SLVR 3D,FTWCAR Rec	Sdn, electric windows,		101170		W	190410	15A1-DIS
<input type="checkbox"/>		FDR-L MAZCX7	MAZCX7	2011	A	A	X SP1,LH,BLK,FTWCAR Recycled Original Equipme	LH		102260		W	181122	20C-DIS
<input type="checkbox"/>		FDR-R MAZCX7	MAZCX7	2011	C	A	RH,NIQ,4L1,BLK,FTWCAR Recycled Original Equipm	RH		102260		W	181122	20C-DIS

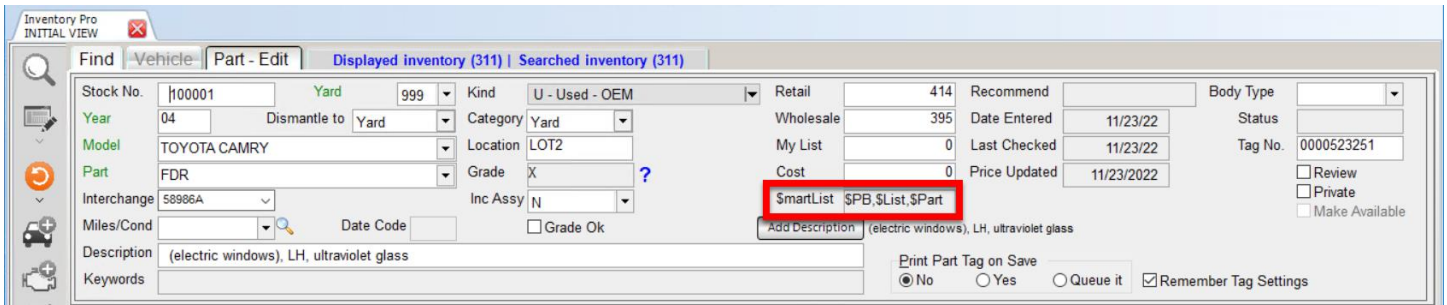
# Bid Amount Field Auto-Calculates

When you're adding or editing a vehicle in Inventory Pro, the **Bid Amount** field now adjusts in real-time. Checkmate will automatically set the value in this field to be the value in the **Total Cost** field, minus any fees entered in the other fields.

Find Vehicle - Edit		Part		Displayed inventory (34)   Searched inventory (34)	
Yard	999	Vehicle Category	Dismantled	Buyer	FRANK
Stock No.	130825	Sales Type		Purchased Date	
VIN		Disposition		Possession Date	09/02/2013
Year	2012	Disposition Date		Cleared Date	
Model	JEEP WRANGLER	Entered by	FRANK	Towed by	
Location	FD-31B	Date Entered	09/02/2013	Inventoried Date	
Mileage	0	Last Checked	01/03/14	Dismantled by	
		Breakeven Days	2195	Dismantled Date	
		<input type="checkbox"/> VUC Inventoried		Crush Date	
				Sold Date	
				<b>Total Cost</b>	\$2704.00
				<b>Bid Amount</b>	\$2354.00
				Auction Fees	\$75.00
				Buyer Fees	\$200.00
				Internet Fees	\$0.00
				Tow Fees	\$50.00
				Dismantler Cost	\$0.00
				Storage Fees	\$0.00
				Pullout Fees	\$0.00
				Misc. Fees	\$25.00
				Projected Sales	\$225.00
				BM Projected Sales	\$225.00
				PM Projected Sales	\$0.00
				Vehicle Weight	4315
				Scrap Amount	\$0.00
				<b>Part Sales</b>	\$6539.97
				CAT Amount	\$0.00
				Core Amount	\$0.00
				Credits>Returns	\$-111.90
				Adjustments	\$0.00
				<b>Total Sales</b>	\$6428.07

# \$smartList Field in Add/Edit Window

If a part with one or more \$smartList recommendations was inventoried through Partmate, you can now see the recommendation(s) when editing the part in Inventory Pro, in the \$smartList field.



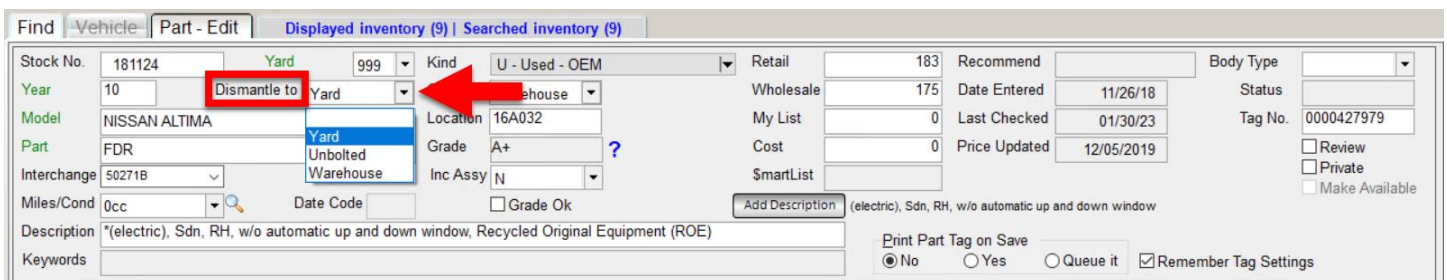
# Dismantle to Field/Column and the Dismantling Instructions Report

The new **Dismantle To** field is only relevant if you use Checkmate Report's **Dismantling Instructions Report**. Checkmate uses this information to populate that report. (For more information, please see our guide [Checkmate Reporting New Features: 2023R1.](#))

For parts you've inventoried from vehicles you have not yet dismantled, Inventory Pro's **Part-Edit** screen now has a field to indicate which Category (**Yard**, **Unbolted**, or **Warehouse**) you intend to assign to the part after dismantling the vehicle. This is the **Dismantle to** field.

If the vehicle was inventoried in Partmate, this field shows the intended category that was designated for the part in Partmate.

You can edit the **Dismantle to** field if the vehicle has not been dismantled yet and you want to change the category for the part that prints on Checkmate Report's **Dismantling Instructions Report**.



**Note:** After the vehicle is dismantled, update the **Category** and **Location** fields for the dismantled parts, like you normally would.



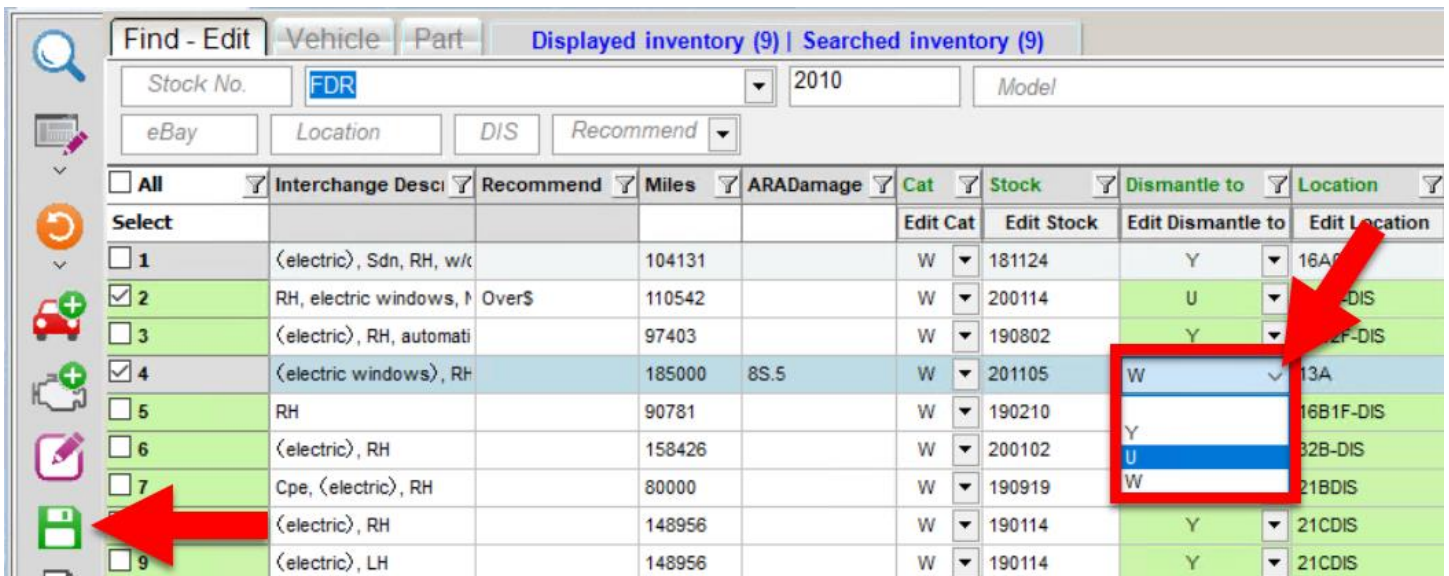
## Dismantle to Column

You can also view and edit a part's **Dismantle to** information in a new information column in Inventory Pro on the **Find** tab.

- **Y** – Yard
- **U** – Unbolted
- **W** – Warehouse

Dismantle to	
Y	▼
U	▼
Y	▼
W	▼
Y	▼
Y	▼
Y	▼
Y	▼

Click the drop-down for part to in this column to change a parts' **Dismantle to** information. Then click the save icon to make the changes permanent.



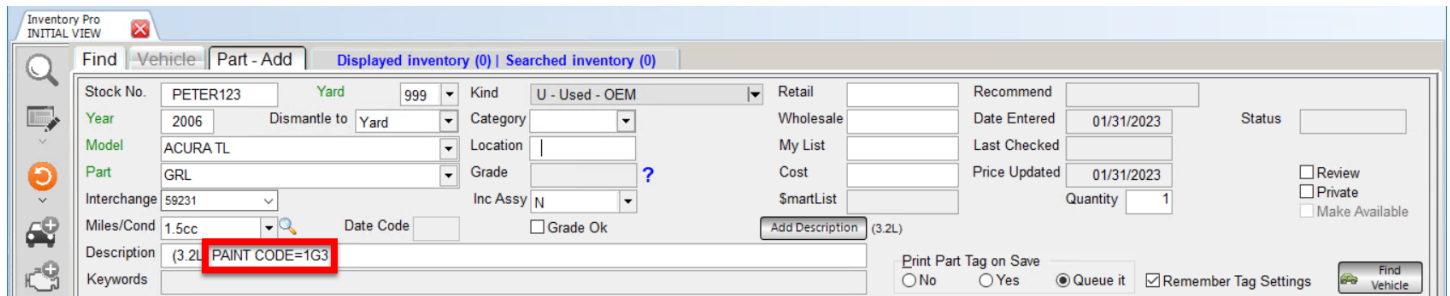
All	Interchange Descr	Recommend	Miles	ARADamage	Cat	Stock	Dismantle to	Location
<input type="checkbox"/>					Edit Cat	Edit Stock	Edit Dismantle to	Edit Location
<input type="checkbox"/>	1	<electric>, Sdn, RH, w/c	104131		W	181124	Y	16A
<input checked="" type="checkbox"/>	2	RH, electric windows, 1 Over\$	110542		W	200114	U	DIS
<input type="checkbox"/>	3	<electric>, RH, automati	97403		W	190802	Y	2F-DIS
<input checked="" type="checkbox"/>	4	<electric windows>, RH	185000	8S.5	W	201105	W	13A
<input type="checkbox"/>	5	RH	90781		W	190210		16B1F-DIS
<input type="checkbox"/>	6	<electric>, RH	158426		W	200102	Y	32B-DIS
<input type="checkbox"/>	7	Cpe, <electric>, RH	80000		W	190919	U	21BDIS
<input type="checkbox"/>	8	<electric>, RH	148956		W	190114	Y	21CDIS
<input type="checkbox"/>	9	<electric>, LH	148956		W	190114	Y	21CDIS

# Paint Codes in Part Descriptions

Car-Part.com scans part descriptions for damage codes, in order to verify a part's grade. Sometimes, there are paint codes that could be confused with damage codes (e.g., on a 2020 Toyota 4-Runner hood, "1G3" code could mean that the color is Magnetic Metallic Gray, or it could mean that the part has 3 units of damage).

Soon, Car-Part.com will be updated to include a work-around, so that you will be able to include paint codes in your descriptions in a way that they will not be confused with damage codes.

That work-around is: in your description, include "Paint Code=" before the code (e.g., "Paint Code=1G3"). Car-Part.com will recognize that this is not an ARA damage code. We suggest that you begin implementing this strategy in your descriptions now.

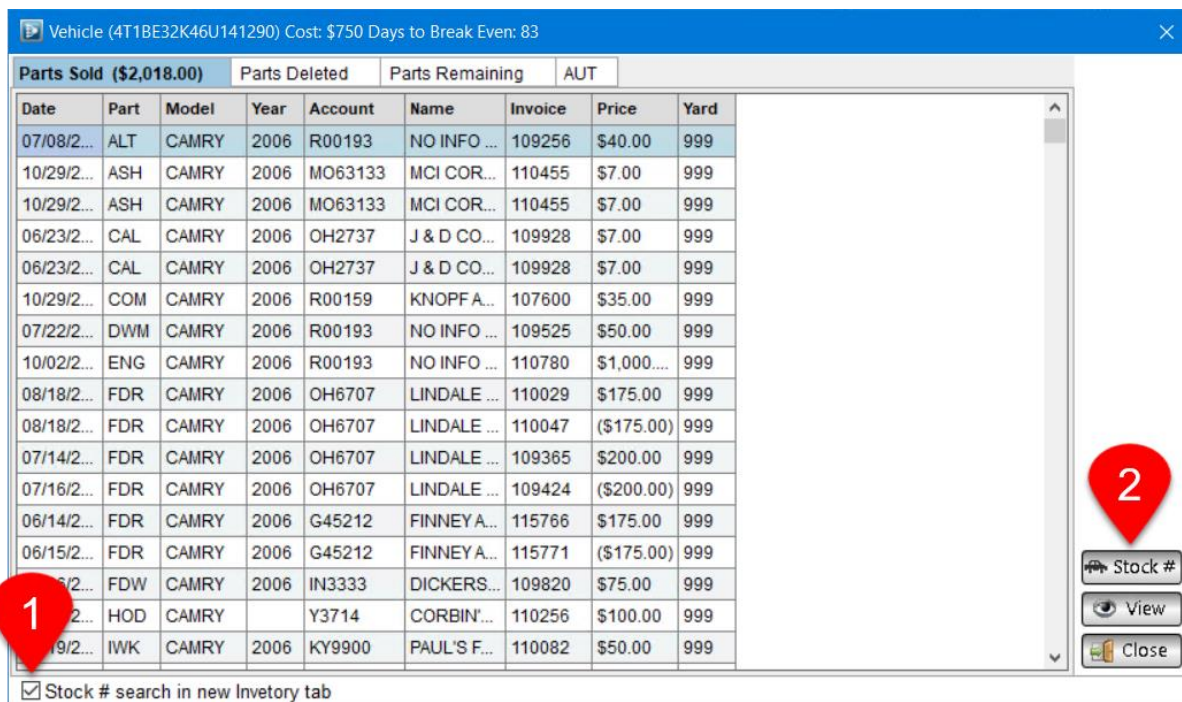


# Stock # Searches in a New Inventory Pro Tab

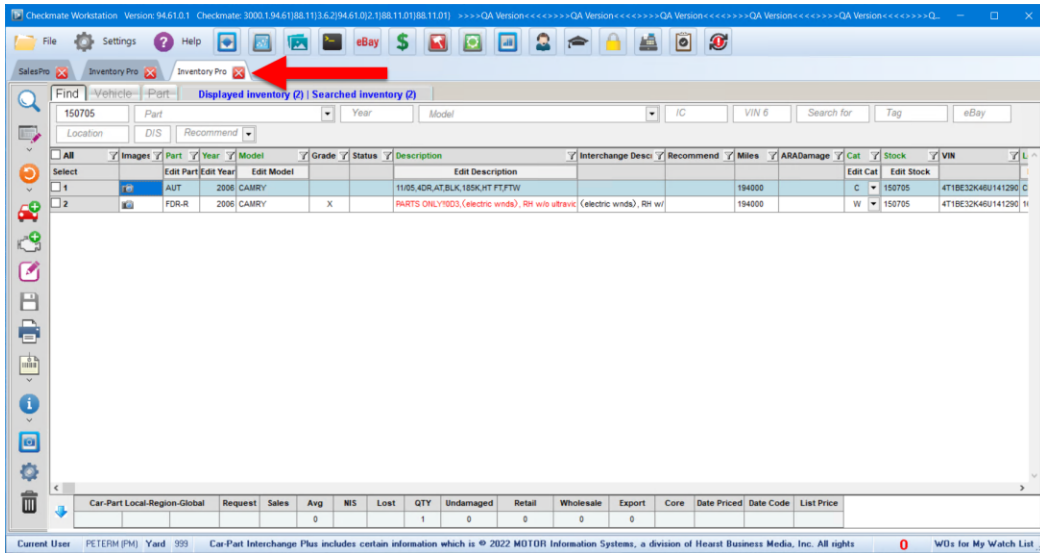
When running a **Stock #** search in Inventory Pro's **Vehicle History** window, you now have the option to launch the search in a new Inventory Pro tab. When the search is launched in a new Inventory Pro tab, your previous search results (and any edits to the results) on your previous Inventory Pro are unaffected, so you won't lose any work.

From the **Vehicle History** window:

1. Check the box for **Stock # search in new Inventory tab**.
2. Click the **Stock #** button.

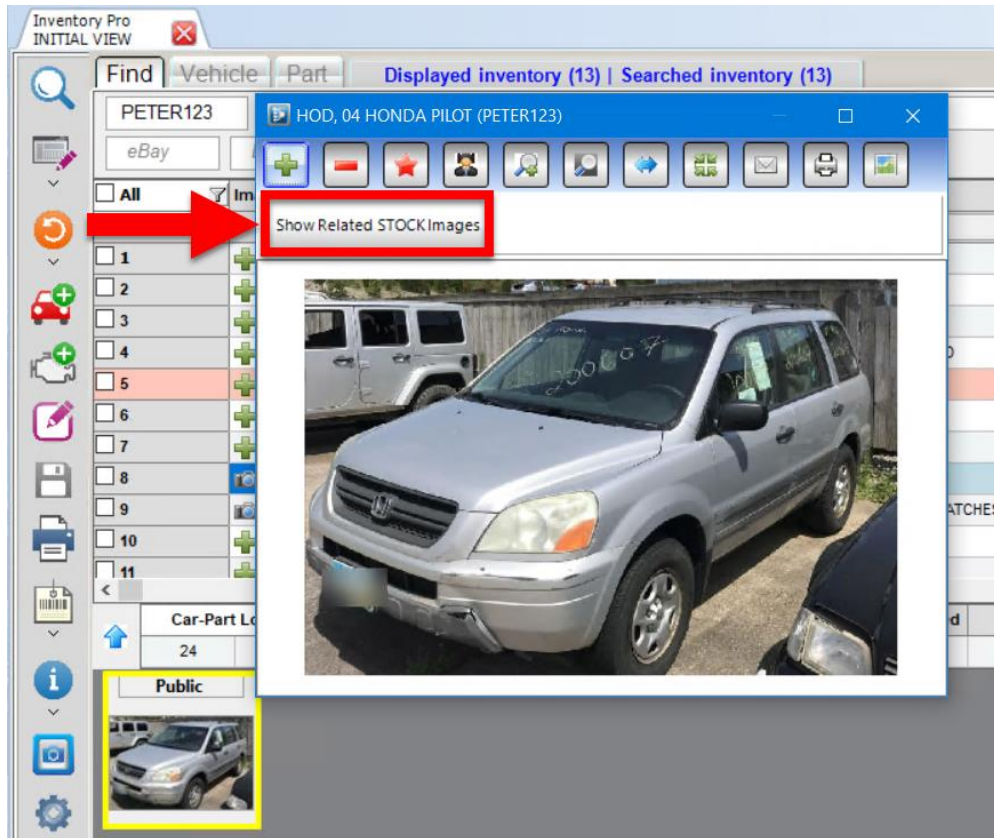


A new Inventory Pro tab appears, displaying your inventoried parts for the stock number.



# Show Related STOCK Images Button Added to Inventory Pro

When viewing images in Inventory Pro, the **Show Related STOCK Images** button is now available. Click it to view any available images associated with the AUT or the rest of the vehicle.



# Getting Help

For more information about this product, including access to online training videos and documentation, visit [Products.Car-Part.com](http://Products.Car-Part.com) for our recycler resources.

Car-Part.com takes customer service seriously. We have a variety of support options available to help you if you have questions about our products or if you need help for any reason. Your questions are very important to us and we want your experience to be a positive one. Please contact us with any questions or concerns using any of the following methods.

## **Phone Support**

If you have a question not covered in this guide, Car-Part.com offers phone support. Please call 859-344-1925 with your questions.

## **Online Support using Car-Part Messaging (iCPM)**

Support technicians are available online using Car-Part Messaging (iCPM) support rooms. These technicians are available LIVE to help answer any questions you may have.

The support rooms are staffed Monday–Friday, 8:00AM–6:00 PM Eastern Time.

To enter an iCPM support room:

1. Double-click the **iCPM** icon on your desktop.



2. **Car-Part Messaging** opens.
3. Double-click the name of the **Support Room** from your bookmark list.
4. Type **HELP** and a brief explanation of your issue. A Car-Part.com support technician will answer and help with your issue.

# Training

If you have ongoing training needs, Car-Part.com has a team of product training specialists to help you learn how to use our products quickly. If you are interested in product training, please call our training department at 859-344-1925 and a trainer in your area will call to schedule training.

# Comments

We welcome your comments and suggestions concerning the content and organization of this guide as well as the accuracy and the usability of the instructions it contains. Email us at [documentation@car-part.com](mailto:documentation@car-part.com). We're listening!

Published by  
Car-Part.com  
1980 Highland Pike  
Ft. Wright, KY 41017

Copyright © 2023 by Car-Part.com. All rights reserved.

The information contained herein is confidential proprietary information of Car-Part.com. No part of the information contained in this document may be reproduced, transmitted, or disclosed to any other person without the prior written consent of Car-Part.com.

Bidmate, Car-Part.com Demand Data, Advanced Bidmate, Partmate, Partmate Review, Desktop Review, Advanced Partmate, \$martList, Photomate, Checkmate Rest Server, Car-Part Messaging, Car-Part Interchange, Car-Part Interchange Plus, iCPM, Live Service, Live Chat, Coremate, Core Pricing, Checkmate, Checkmate Listing Manager, Checkmate Sales Pro, Checkmate Workstation, Fast Parts, FastNnet, Car-Part Exchange, Trading Partners, Compass, Orion, SmartVin, Smart Interchange, Order Trakker, Car-Part Auction, CrashLink, Car Part Pro, Desktop Review, Partmate Review, Labelmate, Car-Part EMS Pro, Integrated Car Part Pro, iPro, Car-Part Gold, and Tagmate are trademarks of Car-Part.com.

Car-Part Interchange information is © 2005-2023. The Hollander Interchange is included with or is the basis for the Car-Part Interchange. The Hollander Interchange is © 2023 Claims Services Group, Inc. Some of the information available through this product contains material that is reproduced and distributed under a license from Ford Motor Company. No further reproduction or distribution of the Ford Motor Company material is allowed without the express written permission of Ford Motor Company.

All other product and company names mentioned herein are the property of their respective owners.

**This edition obsoletes all previous editions.**