

How to Mark Images as Primary or Private in Checkmate, Partmate, and Photomate

The images you associate with your parts are uploaded with your inventory to be included in your part listings on Car-Part.com, Car Part Pro, Trading Partners, eBay, and your own website. You can mark an individual part image as either Primary or as Private.

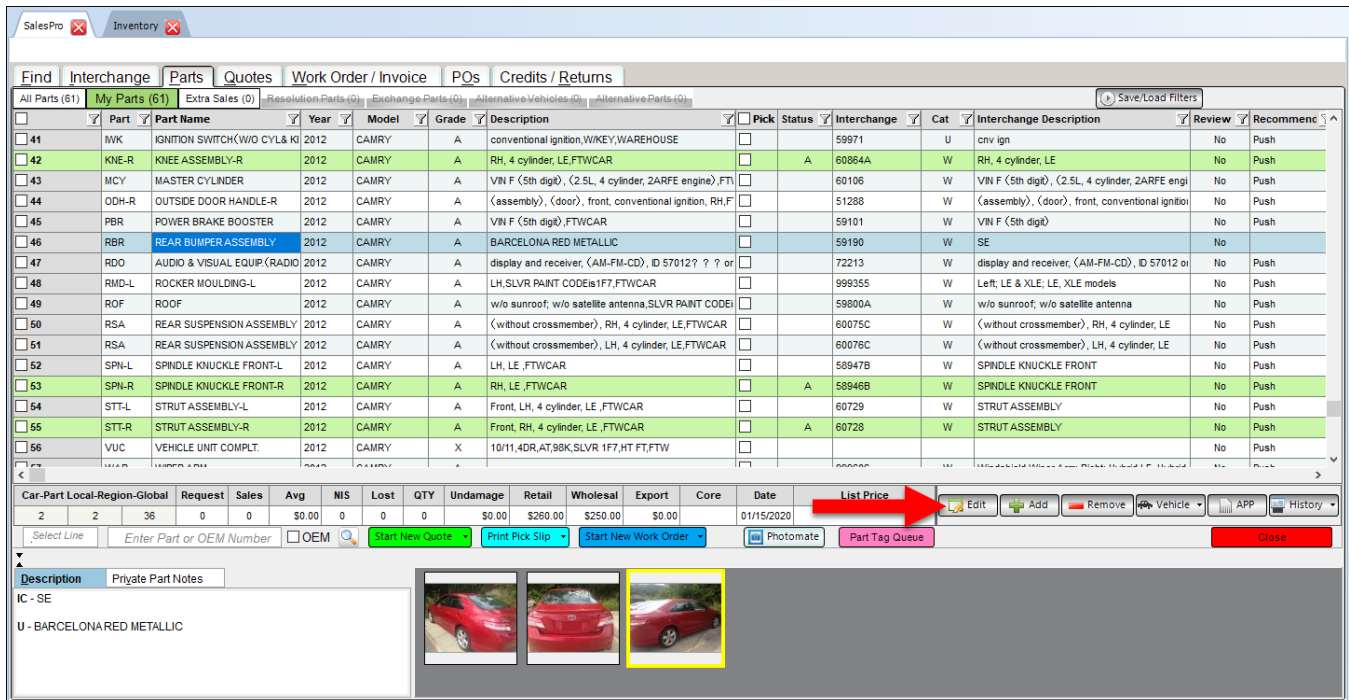
- **Primary** image – This is the image that is used as the thumbnail for that part’s online listing.
- **Private** images – If you have images you don’t want to be visible to customers, you can mark them as **Private**. Private images are visible in Checkmate but they *will not* upload to any online part listings.

This guide shows you how to mark images as Primary or Private in Checkmate, Partmate, and Photomate.

Checkmate Sales Pro

To mark an image as Primary or Private from Checkmate Sales Pro, follow these steps:

1. Search for a part. The search results appear on the **Parts** tab.
2. Click to highlight a part,
3. Click the **Edit** button.



The screenshot shows the 'Inventory' window in Checkmate Sales Pro. The 'Parts' tab is selected, displaying a table of parts. The following table represents the data visible in the screenshot:

Part #	Part Name	Year	Model	Grade	Description	Pick	Status	Interchange	Cat	Interchange Description	Review	Recommend
41	IGNITION SWITCH(W/O CYL& KI)	2012	CAMRY	A	conventional ignition,WIKEY,WAREHOUSE			59971	U	cnv ign	No	Push
42	KNEE ASSEMBLY-R	2012	CAMRY	A	RH, 4 cylinder, LE,FTWCAR		A	60864A	W	RH, 4 cylinder, LE	No	Push
43	MASTER CYLINDER	2012	CAMRY	A	VIN F (5th dig), (2.5L, 4 cylinder, 2ARFE engine),FTI			60106	W	VIN F (5th dig), (2.5L, 4 cylinder, 2ARFE engi	No	Push
44	OUTSIDE DOOR HANDLE-R	2012	CAMRY	A	(assembly), (door), front, conventional ignition, RH,F			51288	W	(assembly), (door), front, conventional igniti	No	Push
45	POWER BRAKE BOOSTER	2012	CAMRY	A	VIN F (5th dig),FTWCAR			59101	W	VIN F (5th dig)	No	Push
46	REAR BUMPER ASSEMBLY	2012	CAMRY	A	BARCELONA RED METALLIC			59190	W	SE	No	Push
47	AUDIO & VISUAL EQUIP(RADIO)	2012	CAMRY	A	display and receiver, (AM-FM-CD), ID 57012? ?? or			72213	W	display and receiver, (AM-FM-CD), ID 57012 oi	No	Push
48	ROCKER MOULDING-L	2012	CAMRY	A	LH,SLVR PAINT CODEis1F7,FTWCAR			999355	W	Left, LE & XLE; LE, XLE models	No	Push
49	ROOF	2012	CAMRY	A	w/o sunroof; w/o satellite antenna.SLVR PAINT CODEI			59800A	W	w/o sunroof; w/o satellite antenna	No	Push
50	REAR SUSPENSION ASSEMBLY	2012	CAMRY	A	(without crossmember), RH, 4 cylinder, LE,FTWCAR			60075C	W	(without crossmember), RH, 4 cylinder, LE	No	Push
51	REAR SUSPENSION ASSEMBLY	2012	CAMRY	A	(without crossmember), LH, 4 cylinder, LE,FTWCAR			60076C	W	(without crossmember), LH, 4 cylinder, LE	No	Push
52	SPINDLE KNUCKLE FRONT-L	2012	CAMRY	A	LH, LE, FTWCAR			58947B	W	SPINDLE KNUCKLE FRONT	No	Push
53	SPINDLE KNUCKLE FRONT-R	2012	CAMRY	A	RH, LE, FTWCAR		A	58946B	W	SPINDLE KNUCKLE FRONT	No	Push
54	STRUT ASSEMBLY-L	2012	CAMRY	A	Front, LH, 4 cylinder, LE,FTWCAR			60729	W	STRUT ASSEMBLY	No	Push
55	STRUT ASSEMBLY-R	2012	CAMRY	A	Front, RH, 4 cylinder, LE,FTWCAR		A	60728	W	STRUT ASSEMBLY	No	Push
56	VEHICLE UNIT COMPLT.	2012	CAMRY	X	10/11,4DR,AT,98K,SLVR 1F7,HT FT,FTW						No	Push

The bottom toolbar includes buttons for 'List Price', 'Edit', 'Add', 'Remove', 'Vehicle', 'APP', and 'History'. The 'Edit' button is highlighted with a red arrow. Below the toolbar, the 'Description' field shows 'U - BARCELONA RED METALLIC' and three thumbnail images of a red car, with the rightmost image highlighted by a yellow border.

4. Checkmate Inventory Pro opens for you to edit the part (see next section).

Checkmate Inventory Pro

In Checkmate Inventory Pro, you can mark part images as Primary or Private when the part is open for editing. Parts are opened for editing from:

- Checkmate Sales Pro by clicking the **Edit** button from your search results. This opens Inventory Pro.
- Inventory Pro by double-clicking a part from your search results.

Once the part displays on the **Part** tab, you can edit the part. Follow these steps to mark the part's images as Primary or Private:

1. On the **Part** tab, click the **Imaging** tab.
 - If you need to add images to the part, click the **Add Image** button.
2. In the image tray at the bottom of the screen, click to select the image you want to mark as Primary or Private.
3. Click the appropriate button:
 - **Set Primary**
 - **Set Private**

The screenshot shows the 'Inventory' window with the 'Part - Edit' tab selected. The 'Find' section shows 'Vehicle' selected. The main form contains the following data:

Stock No.	200300	Kind	Used - OEM	Retail	315	Recommend	
Year	10	Yard	999	Category	Warehouse	Wholesale	300
Model	TOYOTA CAMRY	Location	12A13B	Cost	0	Date Entered	02/18/22
Part	FDR	Grade	X	Date Code		Last Checked	02/18/22
Interchange	50241B	Tag No.	0000508581	Price Updated			02/18/2022
Miles/Cond		Description	(electric windows), RH, North America built, Barcelona Red Metallic				

Below the form is a table with columns: Local, Region, Global, Requests, Sales, Avg Days Sold, List Price, Avg Sales. The values are: 9, 9, 227, 0, 0, 0, \$1,851.00, 0.

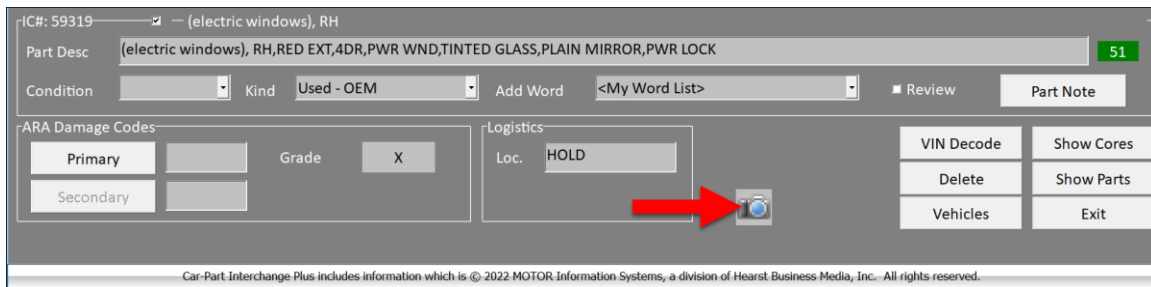
The 'Imaging' tab is selected, and the 'Set Primary' button is highlighted. A red callout '1' points to the 'Imaging' tab. A red callout '2' points to the image tray. A red callout '3' points to the 'Set Primary' button.

Partmate

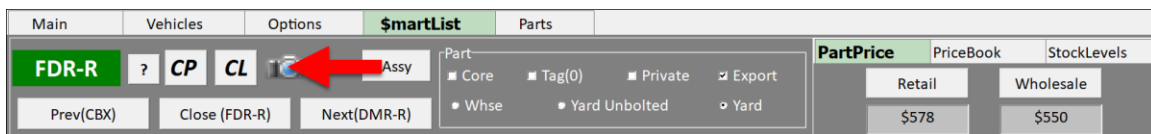
To mark an image as Primary or Private in Partmate, follow these steps:

1. After a part has been inventoried, click the camera icon button.

- **Parts tab:**

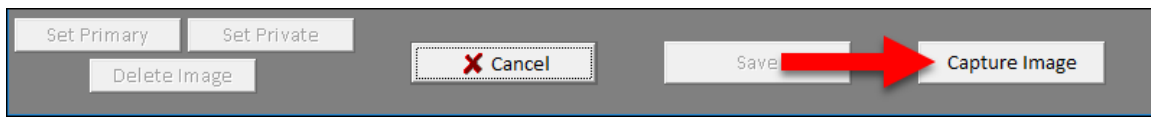


- **\$martList tab:**



2. The camera application opens. If necessary, add images to the part:

- Press **Capture Image**, to take a new photo with your device.

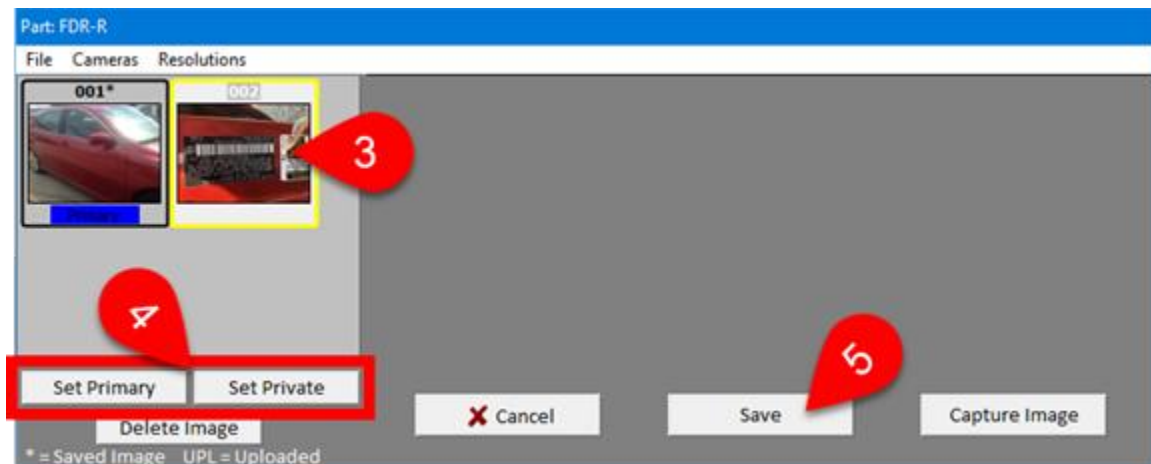


- Press **File>Load Image** and select image(s) from your device's camera roll.

3. When the photo you want to mark as Primary or Private is displayed on the left, tap to select the image.

4. Press the appropriate button:

- **Set Primary**
- **Set Private**





5. Tap **Save** to save your changes.

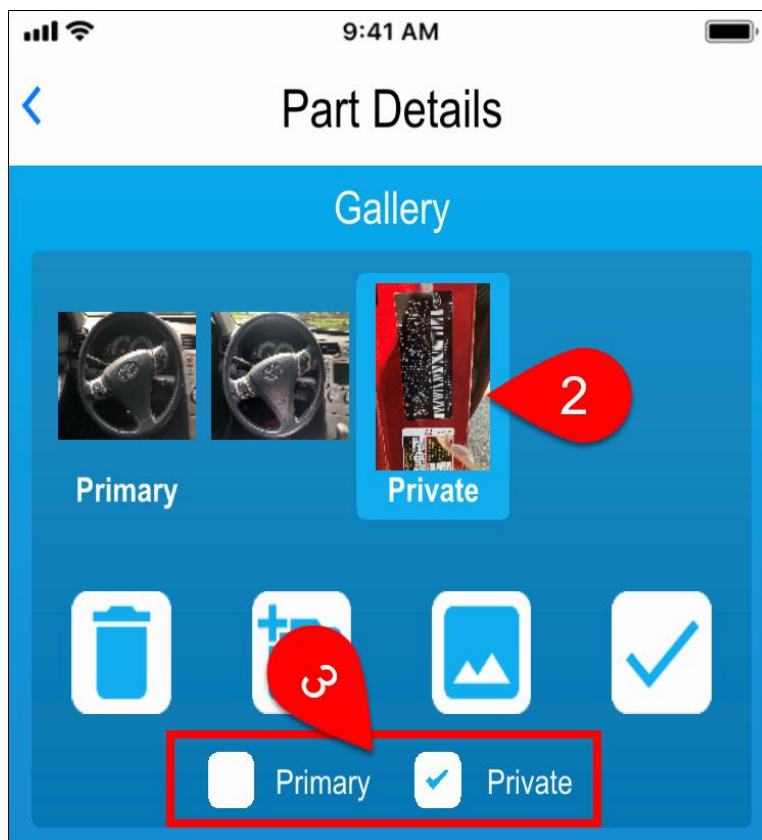
Photomate

In Photomate, there are two functions that allow you to add photos to parts and mark them as Primary or Private:


- **Add Image to a Part**
- **Inventory a Part**

In both cases, you mark an image as primary or private after you've added images to a part:

1. On the **Part Details** screen, add photos to the part:
 - Tap the camera button  to take photos with your device.
 - Tap the gallery button  to select photos from the camera roll.
2. In the **Gallery** section, tap to select the photo you want to mark as Primary or Private.
3. Tap to check the appropriate option:
 - **Primary**
 - **Private**



This will be reflected in Checkmate as soon you send these changes over from Photomate.

- **Add Image to a Part** – When you press the checkmark  on the **Part Details** screen to submit any photos and changes to Checkmate.
- **Inventory a Part** – When you press **Add to CM** to send the part to Checkmate to add it to inventory.

Getting Help

For more information about this product, including access to online training videos and documentation, visit Products.Car-Part.com for our recycler resources.

Car-Part.com takes customer service seriously. We have a variety of support options available to help you if you have questions about our products or if you need help for any reason. Your questions are very important to us and we want your experience to be a positive one. Please contact us with any questions or concerns using any of the following methods.

Phone Support

If you have a question not covered in this guide, Car-Part.com offers phone support. Please call 859-344-1925 with your questions.

Online Support using Car-Part Messaging (iCPM)

Support technicians are available online using Car-Part Messaging (iCPM) support rooms. These technicians are available LIVE to help answer any questions you may have.

The support rooms are staffed Monday–Friday, 8:00AM–6:00 PM Eastern Time.

To enter an iCPM support room:

1. Double-click the **iCPM** icon on your desktop.



2. **Car-Part Messaging** opens.
3. Double-click the name of the **Support Room** from your bookmark list.
4. Type **HELP** and a brief explanation of your issue. A Car-Part.com support technician will answer and help with your issue.

Training

If you have ongoing training needs, Car-Part.com has a team of product training specialists to help you learn how to use our products quickly. If you are interested in product training, please call our training department at 859-344-1925 and a trainer in your area will call to schedule training.

Comments

We welcome your comments and suggestions concerning the content and organization of this guide as well as the accuracy and the usability of the instructions it contains. Email us at documentation@car-part.com. We're listening!

Published by

Car-Part.com

1980 Highland Pike
Ft. Wright, KY 41017

Copyright © 2023 by Car-Part.com. All rights reserved.

The information contained herein is confidential proprietary information of Car-Part.com. No part of the information contained in this document may be reproduced, transmitted, or disclosed to any other person without the prior written consent of Car-Part.com.

Bidmate, Car-Part.com Demand Data, Advanced Bidmate, Partmate, Partmate Review, Desktop Review, Advanced Partmate, \$martList, Photomate, Checkmate Rest Server, Car-Part Messaging, Car-Part Interchange, Car-Part Interchange Plus, iCPM, Live Service, Live Chat, Coremate, Core Pricing, Checkmate, Checkmate Listing Manager, Checkmate Sales Pro, Checkmate Workstation, Fast Parts, FastNnet, Car-Part Exchange, Trading Partners, Compass, Orion, SmartVin, Smart Interchange, Order Trakker, Car-Part Auction, CrashLink, Car Part Pro, Desktop Review, Partmate Review, Labelmate, Car-Part EMS Pro, Integrated Car Part Pro, iPro, Car-Part Gold, and Tagmate are trademarks of Car-Part.com.

All other product and company names mentioned herein are the property of their respective owners.

This edition obsoletes all previous editions.